



Public Hearing Trustee Area Map Options

September 17, 2025

Jonathan Salt, *F3 Law*
David Lopez, *WSSC*

What is the California Voting Rights Act (“CVRA”)?



- Took effect January 1, 2003
- Prohibits the use of “at-large” elections when such an election system:

“impairs the ability of a protected class to elect candidates of its choice or its ability to influence the outcome of an election....”

(Elections Code §14027.)

What is a “protected class?”



- A class of voters who are members of a ***race, color, or language minority group***, as this class is referenced and defined in the federal Voting Rights Act of 1965 (52 U.S.C. Sec. 10301 et seq.).

(Elections Code §14026(d).)

What is a “By-Trustee Area” Election System

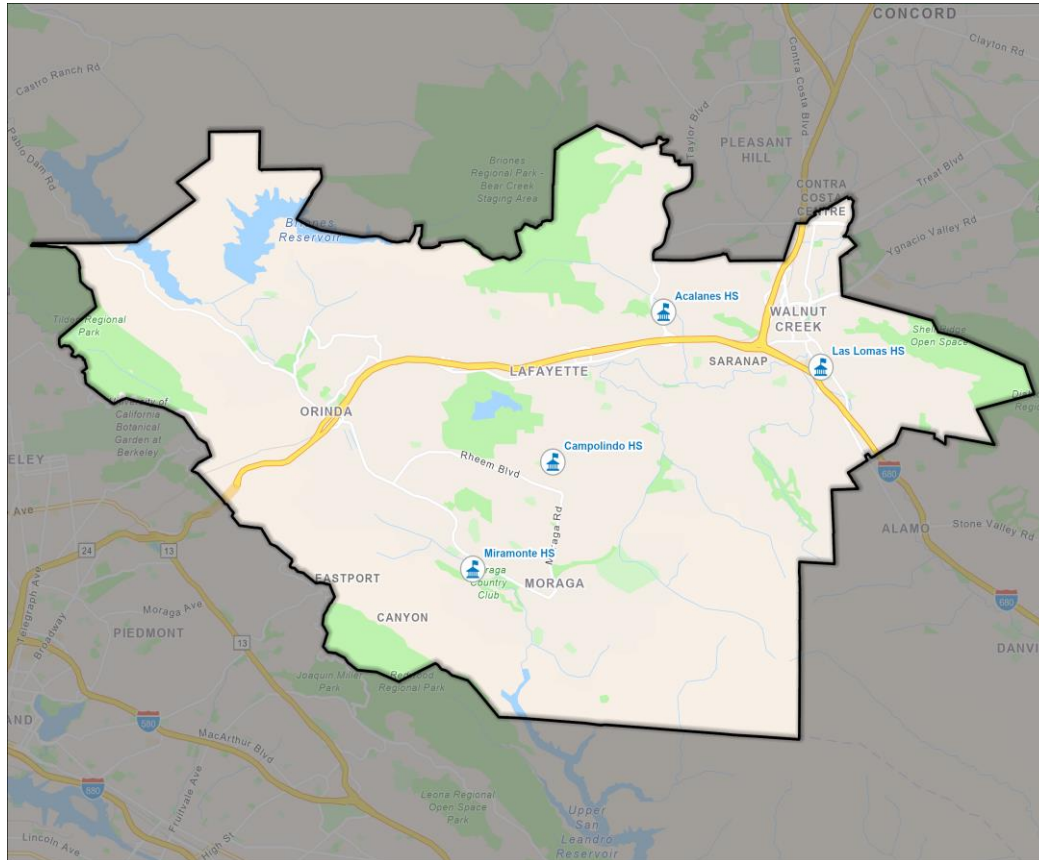
- *Only safe harbor from a CVRA claim*
- School district is divided into trustee areas
- A governing board member is elected from each trustee area
- Board members are elected ***by only the registered voters in the particular trustee area*** where the governing board member resides

Keep in mind...

- With a total population of **119,039**, each **Trustee Area will include *approximately 23,808 people***.
- The difference between the largest and smallest trustee areas can be no more than 2,380 people.
- Census Blocks vary significantly in shape, size, and population totals – approximately 1,100 Census blocks in the District.
- Census Blocks generally are not to be “split” with a Trustee Area boundary line – since we would lose the accuracy of the population balancing count.

District's Demographics

2020 Census Data (Total Population)

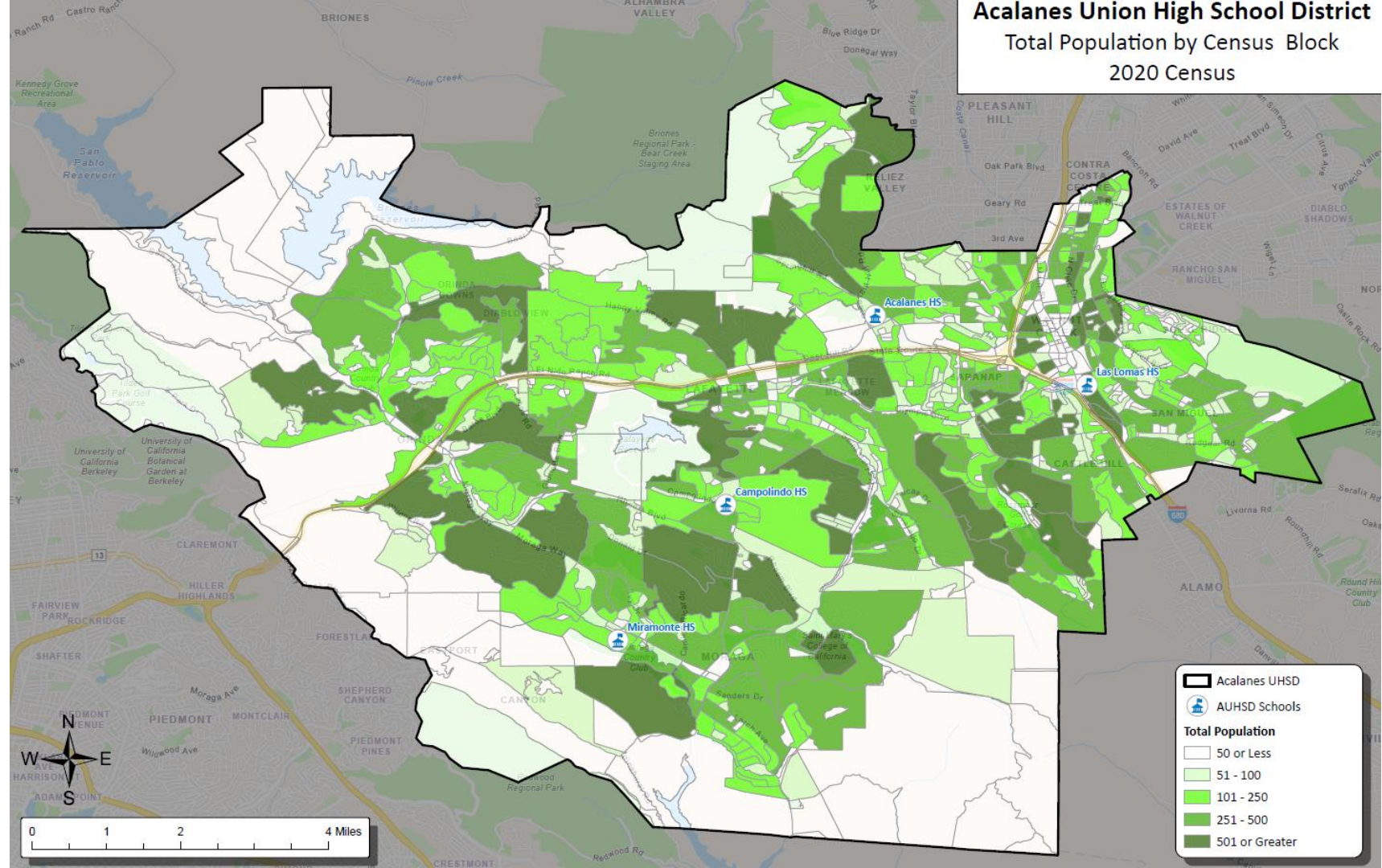


Population	Total Population		Age 18 +	
	Total	%	Total	%
Hispanic/Latino	10,870	9.1%	7,814	8.2%
White	79,149	66.5%	66,087	69.4%
Black/ African American	1,872	1.6%	1,549	1.6%
American Indian/Alaska Native	116	0.1%	100	0.1%
Asian	18,211	15.3%	14,665	15.4%
Native Hawaiian/ Pacific Islander	169	0.1%	148	0.2%
Other	740	0.6%	542	0.6%
Two or More Races	7,912	6.6%	4,313	4.5%
Total Population	119,039	100%	95,218	100%

Acalanes Union High School District

Total Population by Census Block

2020 Census



Acalanes UHSD

AUHSD Schools

Total Population

50 or Less

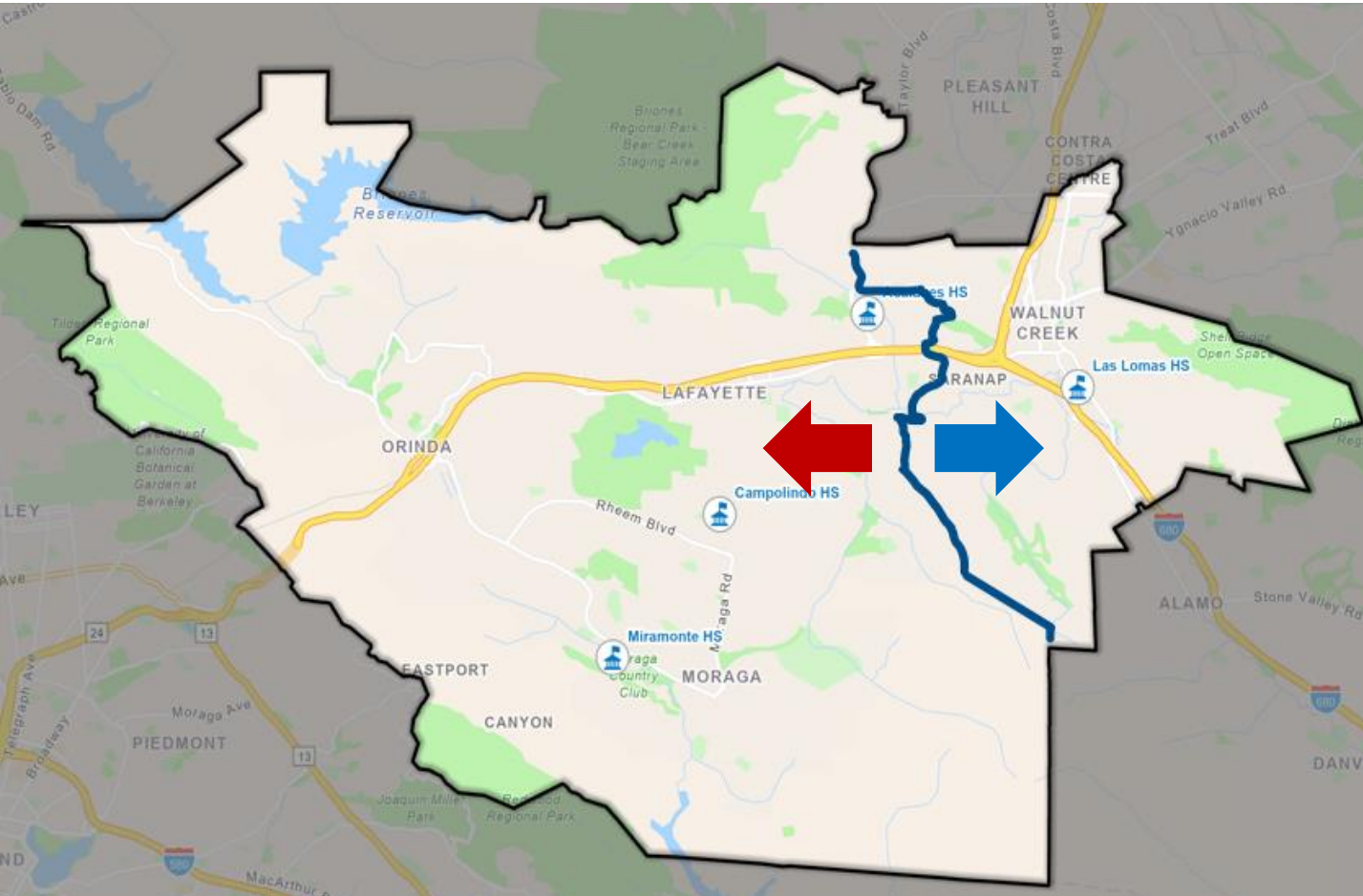
51 - 100

101 - 250

251 - 500

501 or Greater

Population Density (East/West)



East of the Blue Line

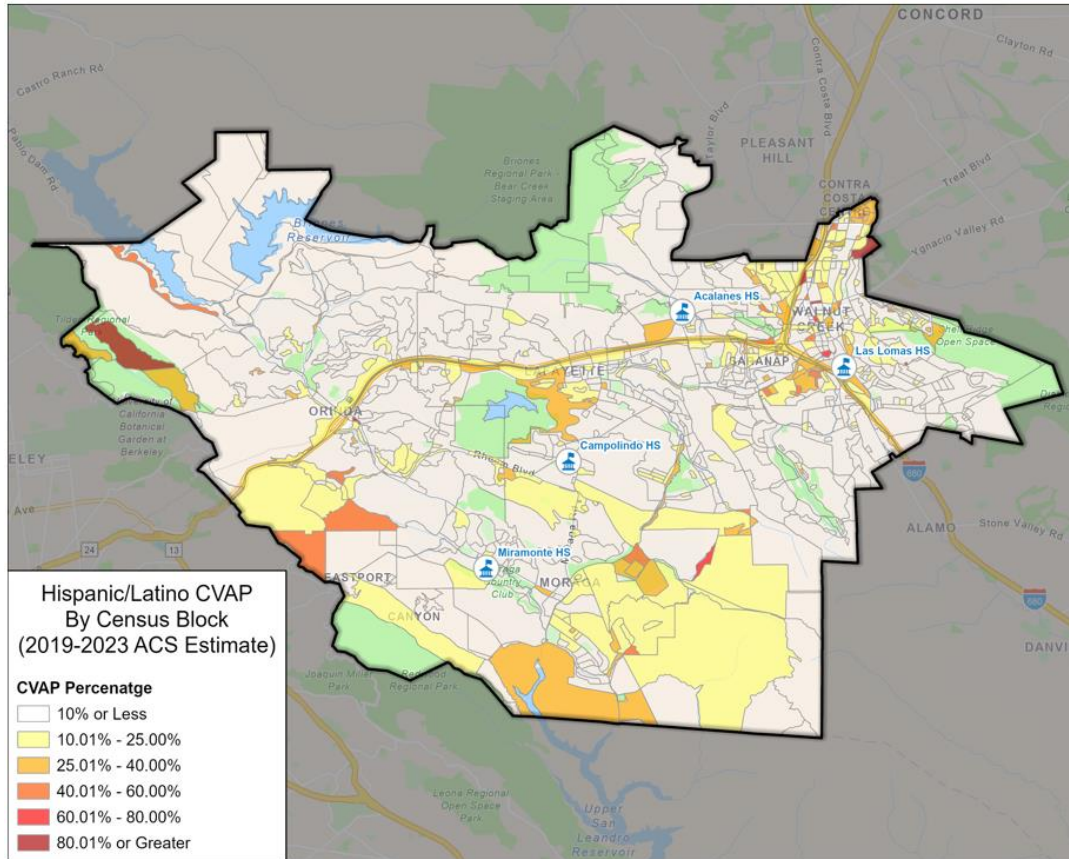
~55,200 people
2 1/3 Trustee Areas

West of the Blue Line

~63,800 people
2 2/3 Trustee Areas

District's Demographics

Hispanic Citizen Voting Age Population Estimates

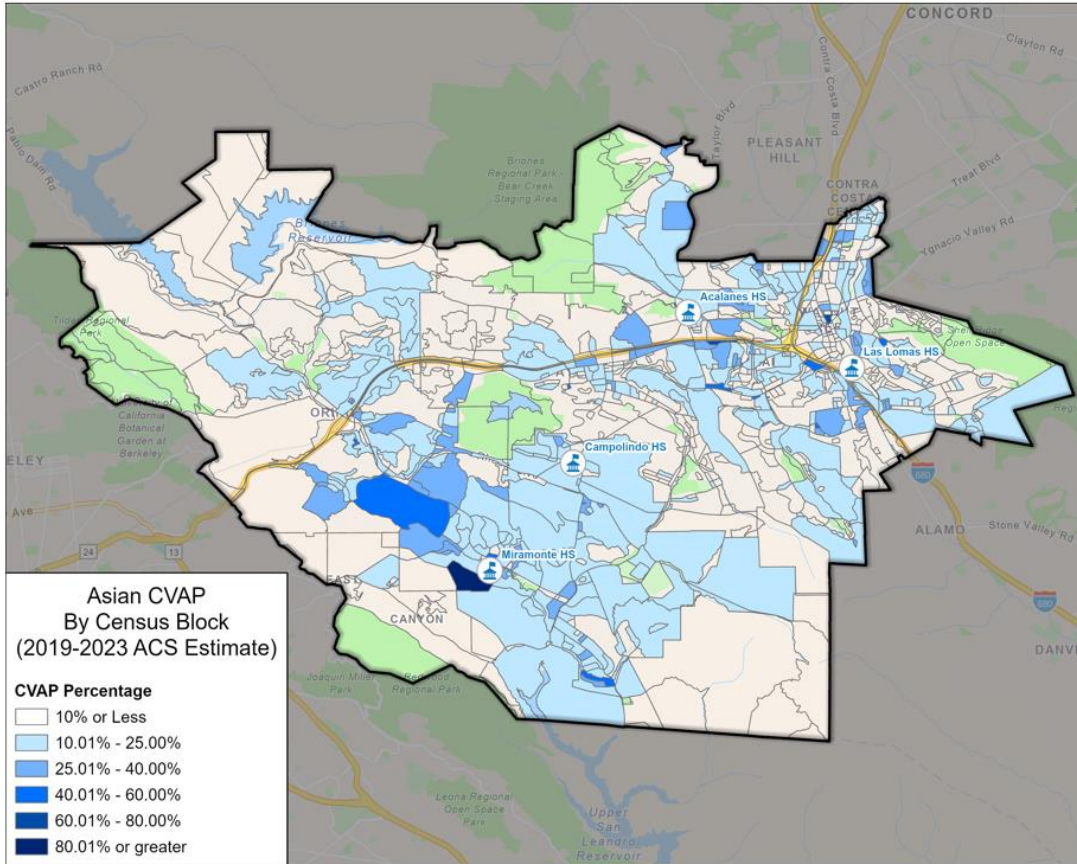


Population	2019-2023 ^[1]	
	Total	%
Hispanic/Latino	7,258	8.3%
White	64,173	73.3%
Black/ African American	1,545	1.8%
American Indian/Alaska Native	146	0.2%
Asian	11,155	12.7%
Native Hawaiian/ Pacific Islander	75	0.1%
Two or More Races	3,219	3.7%
Total Population	87,571	100%

^[1] CVAP data taken from the California Statewide Database which provides the 2019-2023 American Community Survey CVAP estimates with DOJ by 2020 Census blocks and adjustment to reallocate incarcerated persons to their last known residential address.

District's Demographics

Asian Citizen Voting Age Population Estimates

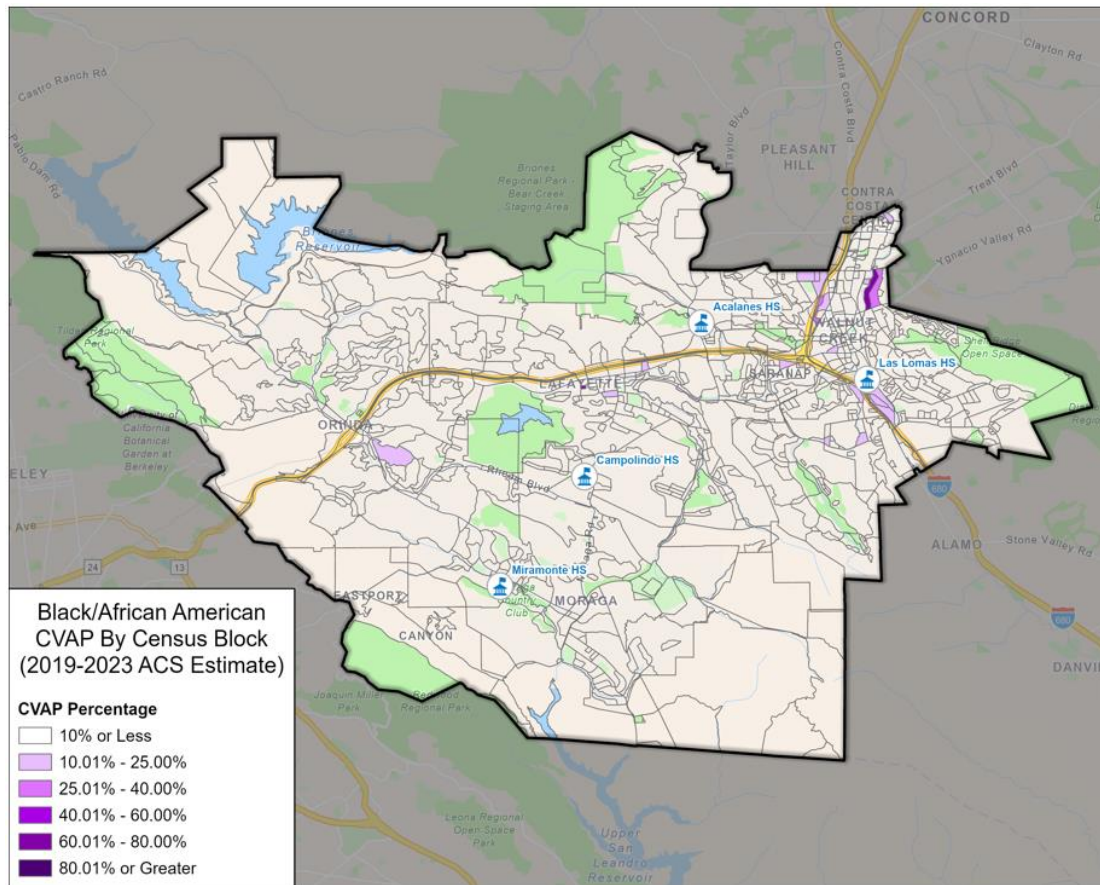


Population	2019-2023 ^[1]	
	Total	%
Hispanic/Latino	7,258	8.3%
White	64,173	73.3%
Black/ African American	1,545	1.8%
American Indian/Alaska Native	146	0.2%
Asian	11,155	12.7%
Native Hawaiian/ Pacific Islander	75	0.1%
Two or More Races	3,219	3.7%
Total Population	87,571	100%

^[1] CVAP data taken from the California Statewide Database which provides the 2019-2023 American Community Survey CVAP estimates with DOJ by 2020 Census blocks and adjustment to reallocate incarcerated persons to their last known residential address.

District's Demographics

Black Citizen Voting Age Population Estimates



Population	2019-2023 ^[1]	
	Total	%
Hispanic/Latino	7,258	8.3%
White	64,173	73.3%
Black/ African American	1,545	1.8%
American Indian/Alaska Native	146	0.2%
Asian	11,155	12.7%
Native Hawaiian/ Pacific Islander	75	0.1%
Two or More Races	3,219	3.7%
Total Population	87,571	100%

^[1] CVAP data taken from the California Statewide Database which provides the 2019-2023 American Community Survey CVAP estimates with DOJ by 2020 Census blocks and adjustment to reallocate incarcerated persons to their last known residential address.

The map displays the Alacranes UHSD area, which includes parts of several cities and communities. The legend identifies the following places and their corresponding colors:

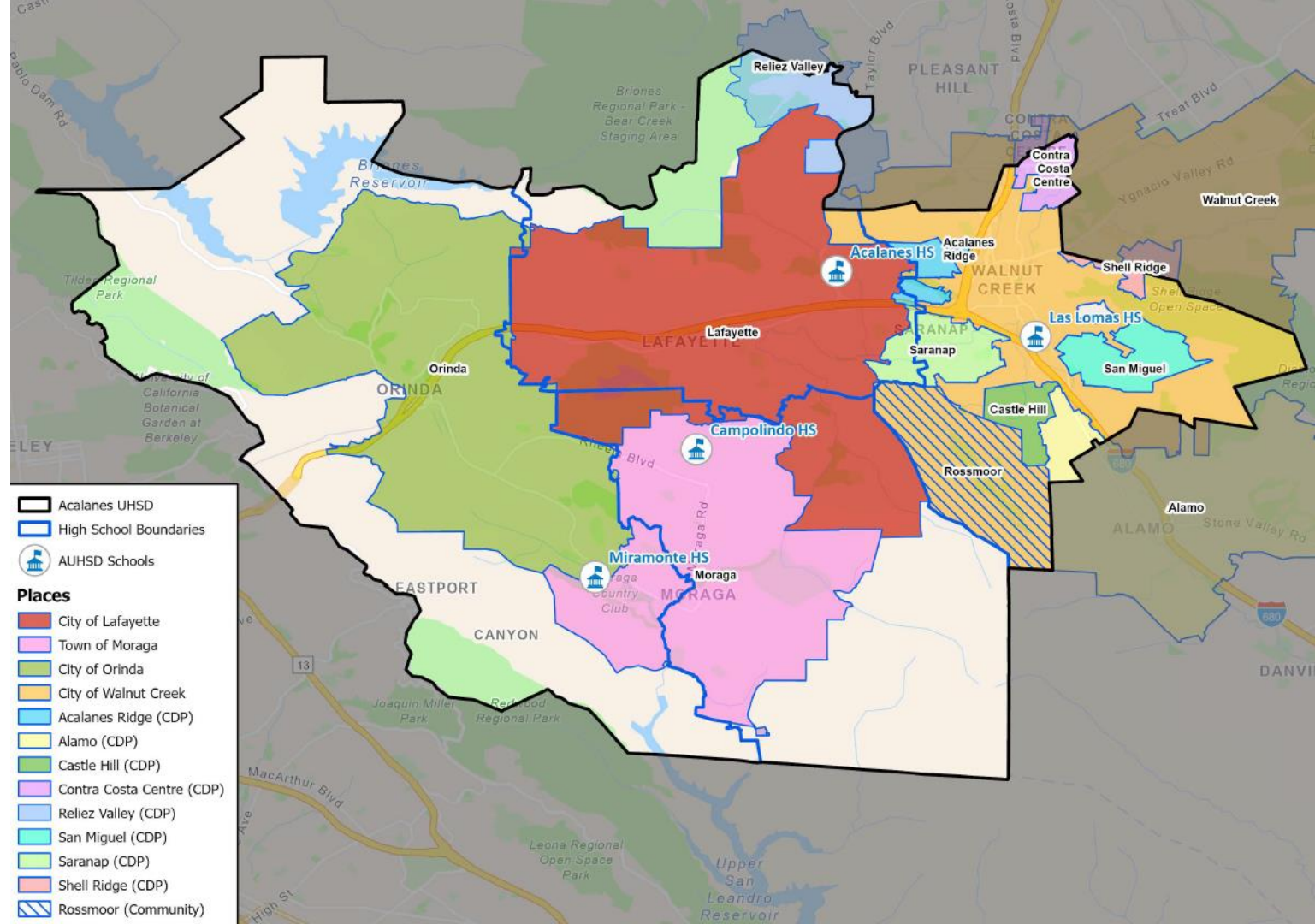
- City of Lafayette (Red)
- Town of Moraga (Pink)
- City of Orinda (Green)
- City of Walnut Creek (Orange)
- Acalanes Ridge (CDP) (Light Blue)
- Alamo (CDP) (Yellow)
- Castle Hill (CDP) (Light Green)
- Contra Costa Centre (CDP) (Purple)
- Reliez Valley (CDP) (Light Blue)
- San Miguel (CDP) (Cyan)
- Saranap (CDP) (Light Green)
- Shell Ridge (CDP) (Pink)
- Rossmoor (Community) (Hatched)

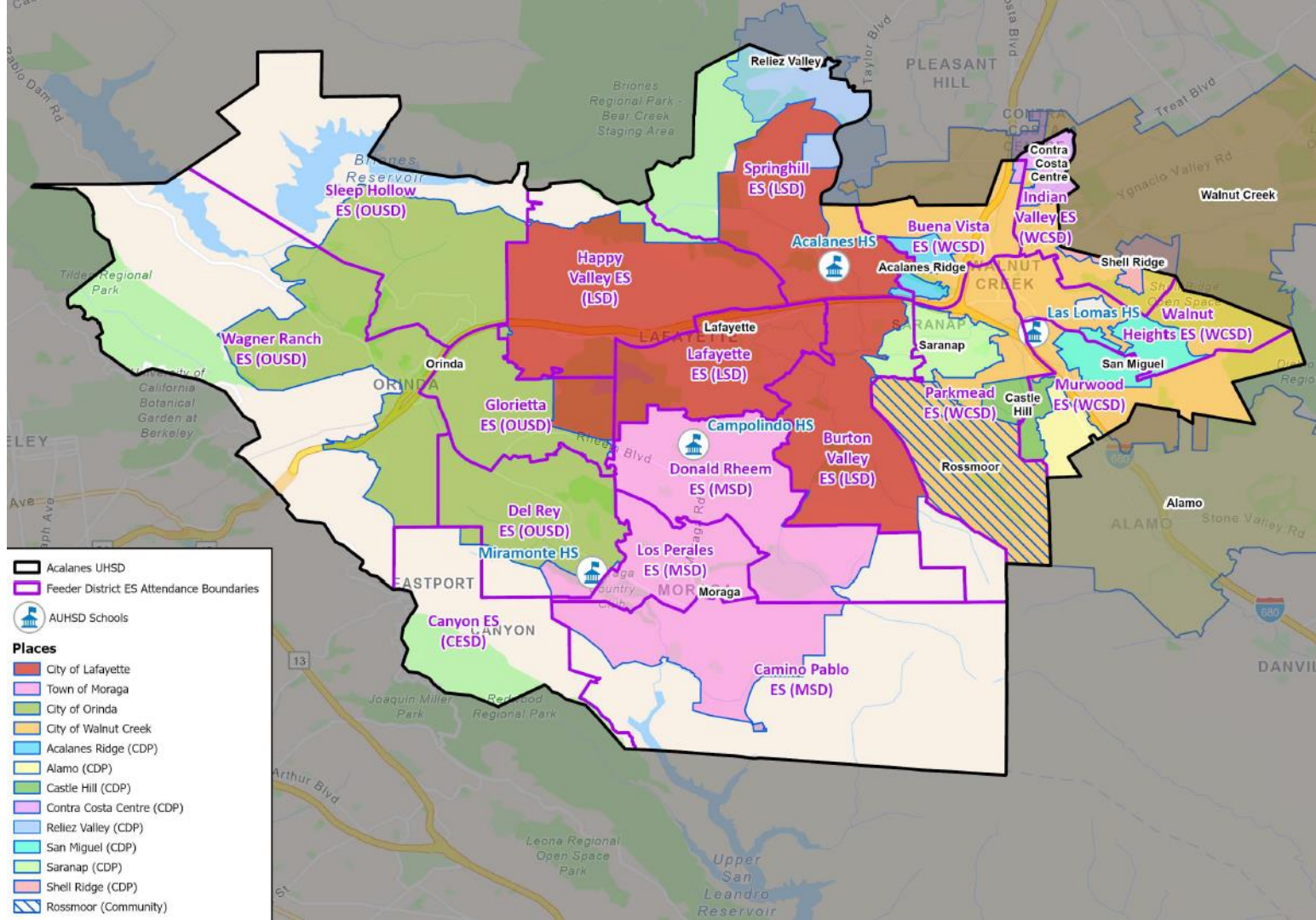
Key locations and features labeled on the map include:

- Cities and Communities:** Lafayette, Moraga, Orinda, Walnut Creek, Alamo, Reliez Valley, Contra Costa Centre, Shell Ridge, San Miguel, Saranap, Castle Hill, Rossmoor.
- Schools:** Acalanes HS, Lafayette, Campolindo HS, Miramonte HS, Las Lomas HS.
- Geographical Features:** Briones Reservoir, Tilden Regional Park, Briones Regional Park, Bear Creek Staging Area, Upper San Leandro Reservoir, Leona Regional Open Space Park, Redwood Regional Park, Joaquin Miller Park, MacArthur Blvd, High St, Taylor Blvd, Ygnacio Valley Rd, Stone Valley Rd, Treat Blvd, Contra Costa Blvd, Pablo Dam Rd.



Cities, CDPs, & HS Areas

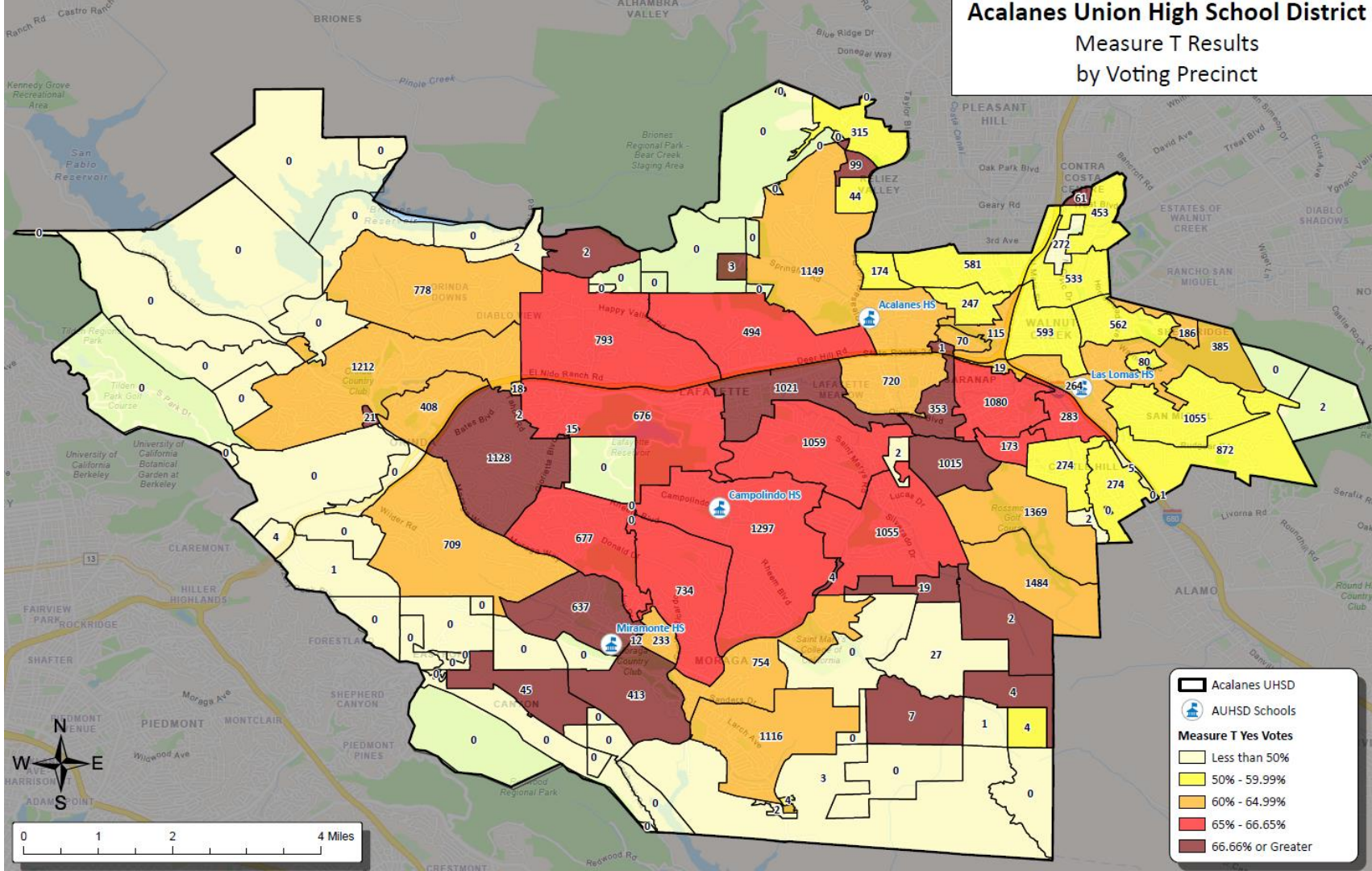


[illegible]

Acalanes Union High School District

Measure T Results

by Voting Precinct



District Student Special Education/504 Data per Map Option

Trustee Area	Option 1	Option 2	Option 3	Option 4
	% Share	% Share	% Share	% Share
Trustee Area No. 1	13.2%	13.1%	16.7%	14.0%
Trustee Area No. 2	9.6%	10.6%	14.8%	14.9%
Trustee Area No. 3	25.3%	24.5%	16.8%	18.4%
Trustee Area No. 4	22.1%	23.4%	23.2%	22.1%
Trustee Area No. 5	27.2%	25.9%	25.9%	28.0%
Out of District	2.6%	2.6%	2.6%	2.6%
Total Population	100.0%	100.0%	100.0%	100.0%

District Student Special Education/504 Data per Map Option



F3 Law

Trustee Area	Option 2A	Option 2B	Option 5
	% Share	% Share	% Share
Trustee Area No. 1	13.1%	13.1%	13.7%
Trustee Area No. 2	10.6%	16.0%	10.0%
Trustee Area No. 3	23.1%	16.3%	22.5%
Trustee Area No. 4	23.2%	22.5%	21.9%
Trustee Area No. 5	27.4%	29.5%	29.3%
Out of District	2.6%	2.6%	2.6%
Total Population	100.0%	100.0%	100.0%

Summary/Recap of Pre-Map Stage



■ Feedback:

- Elementary School sites are Communities of Interest ("CoI"), top priority
- Rossmoor is a CoI
- Buena Vista/Downtown Walnut Creek is a CoI
- Northeast portion: N. Main, apartments/condos along BART tracks
- Income (ensure lower income areas are being represented as much as higher income areas)
- Consider supporters of special education
- Consider those who voted in support of school bonds/parcel taxes
- Cross HS school boundaries to avoid balkanization/silos
- All trustees are accountable to all schools

Summary/Recap of Prior Public Hearing



F3 Law

■ Feedback:

- The more Elementary School attendance areas intact, the better
- Positive feedback on Maps 2 and 4
- Try to ensure all of Rheem ES attendance area can be intact
- Find the best attributes from Maps 2 and 4 and see if its possible to have more ES attendance areas intact
- Ensure Buena Vista/Downtown Walnut Creek is not with Springhill
- Draw a map option where the Miramonte HS attendance area is intact

Current Step: Draft Maps



- Draw Draft Trustee Area Plans
 - Demographer to use 2020 Census Data and additionally permitted updated data.
 - Population must be as equal “as is practicable” – people, not citizens.
 - Ed Code section 1002: “...trustee areas shall be as nearly equal in population...”
 - A certain amount of deviation (10%) may be permitted.

Criteria for Consideration

- Comply with the U.S. Constitution.
- Comply with the California Constitution.
- **Population Balance:**
 - Each area shall contain nearly equal number of inhabitants
- **Comply with the Federal Voting Rights Act:**
 - Determine whether it is possible to create an election district or districts in which a minority group is sufficiently large and geographically compact to constitute a majority in a single-member district.

Criteria for Consideration

AB 764 / Elections Code § 21130



Order of priority:

- ❑ Contiguous
- ❑ Local Neighborhoods/Communities of Interest
- ❑ City/Census designated places
- ❑ Natural/artificial boundaries
- ❑ Geographical compactness

Other Criteria for Consideration:

- ❑ Other local considerations
- ❑ May not adopt boundaries for the purpose of favoring/discriminating against an incumbent, political candidate or political party.

The Map Options - Background



- Each map was randomly assigned a number as a name (i.e., "Option 1," "Option 2," etc.)
- The number name of the map has nothing to do with the numbers of each trustee area on each map.
- Each map option has 5 balanced Trustee Areas.
- On each map:
 - Trustee Area 1 is shaded in **YELLOW**
 - Trustee Area 2 is shaded in **GREEN**
 - Trustee Area 3 is shaded in **RED**
 - Trustee Area 4 is shaded in **BLUE**
 - Trustee Area 5 is shaded in **PURPLE**

Election Sequencing

- Area 1 – 2026
- Area 2 – 2026
- Area 3 – 2028
- Area 4 – 2028
- Area 5 – 2026

Map Option 1

Legend:

- Acalanes UHSD
- AUHSD Schools
- Proposed Trustee Areas**
 - Trustee Area No. 1
 - Trustee Area No. 2
 - Trustee Area No. 3
 - Trustee Area No. 4
 - Trustee Area No. 5

Area 1 – 2026
Area 2 – 2026
Area 3 – 2028
Area 4 – 2028
Area 5 – 2026

 AUHSD Schools

Proposed Trustee Areas

☐ Trustee Area No. 1

☐ Trustee Area No. 2

Trustee Area No. 3

☐ Trustee Area No. 4


Map Option 1

Legend:

- Acalanes UHSD
- High School Boundaries
- AUHSD Schools

Proposed Trustee Areas

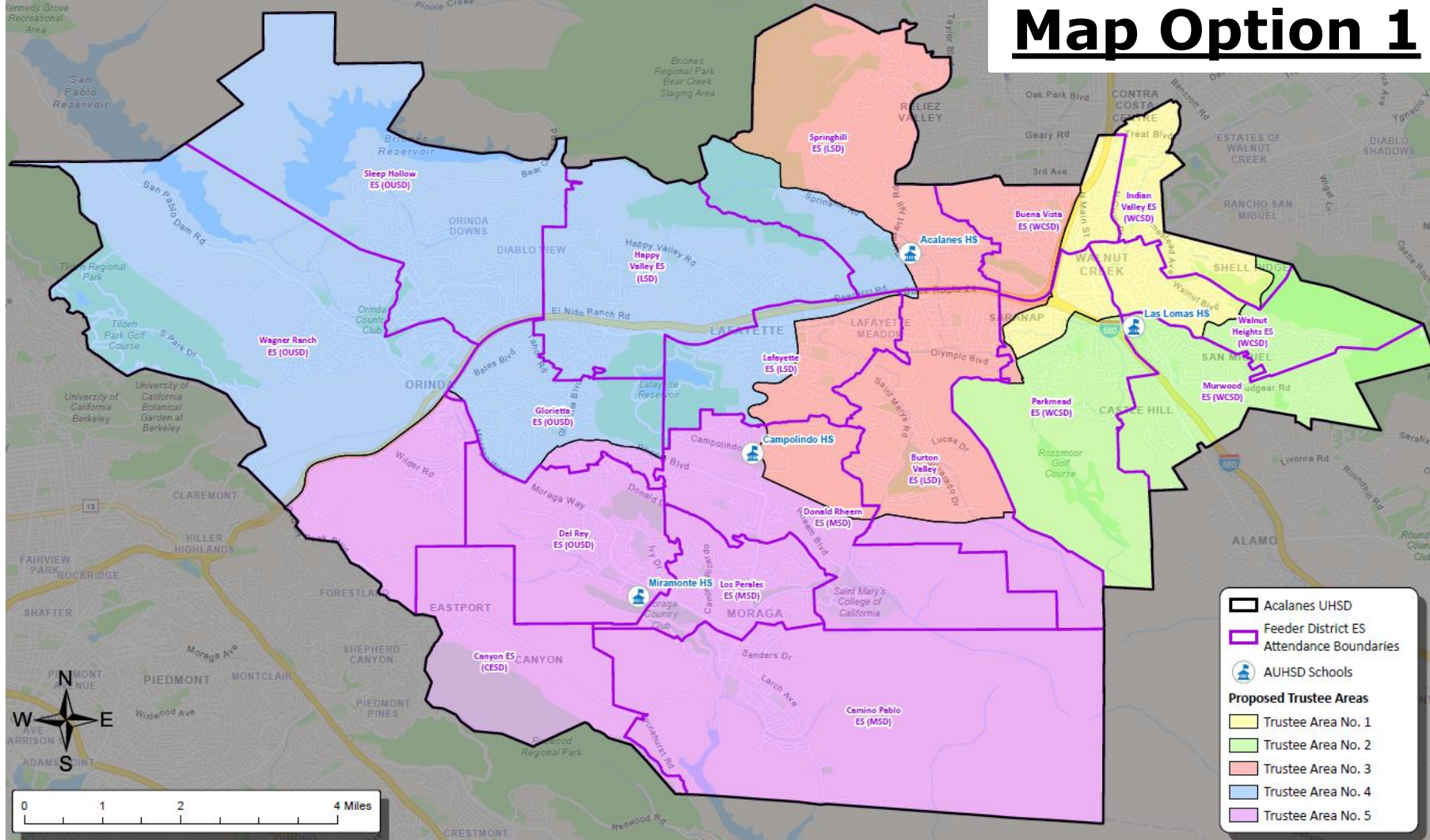
- Trustee Area No. 1
- Trustee Area No. 2
- Trustee Area No. 3
- Trustee Area No. 4
- Trustee Area No. 5

 Trustee Area No. 4

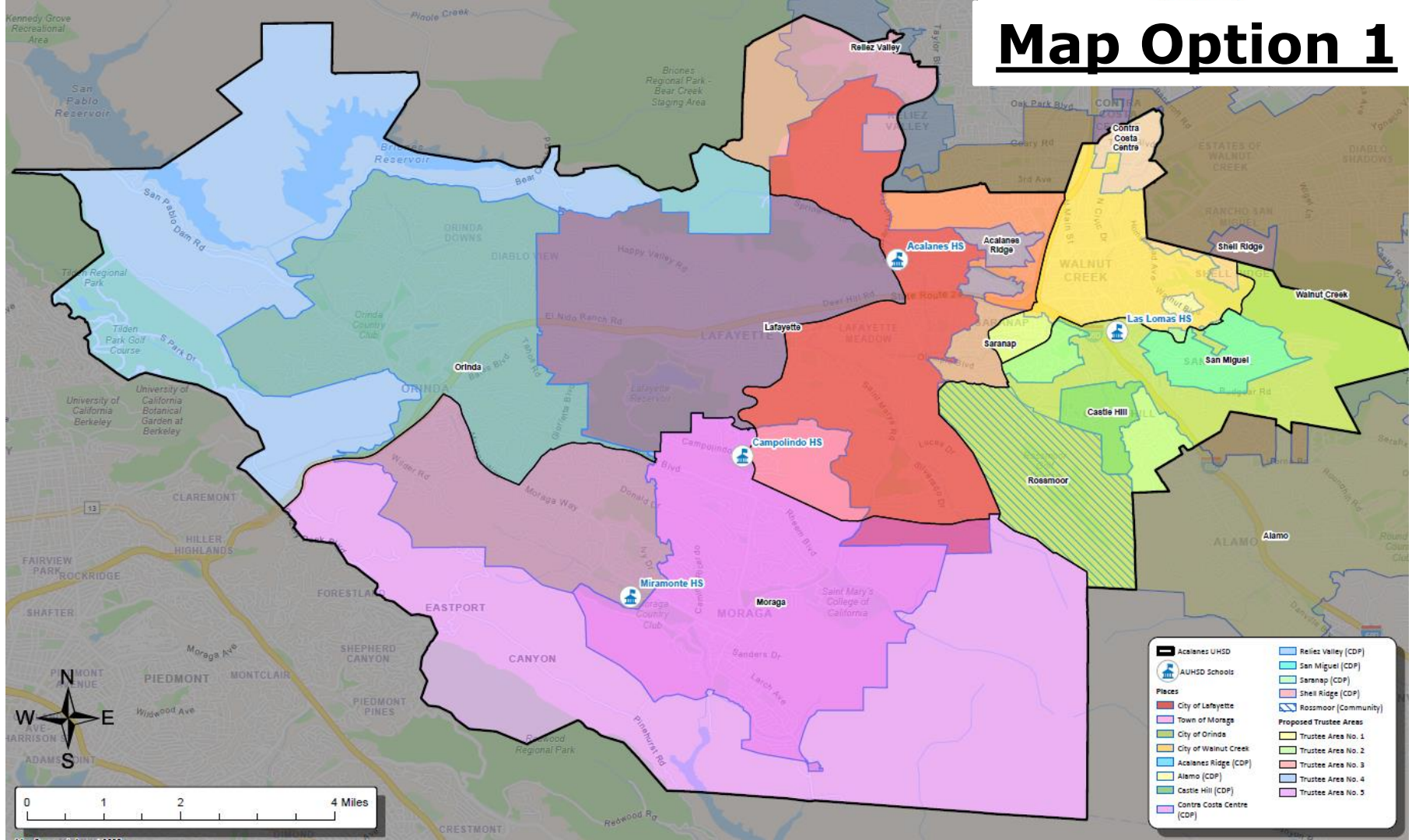


0 1 2 4 Miles

Map Option 1



Map Option 1



Map 1 – Total Population Data



F3 Law

Total Population:		119,039	Ideal Population:		23,808	Variance:		3.1%			
Total Population (2020 Census)											
	Trustee Area 1		Trustee Area 2		Trustee Area 3		Trustee Area 4		Trustee Area 5		
Population		23,786		24,182		23,880		23,445		23,746	
Population Variance		-22		374		72		-363		-62	
		-0.1%		1.6%		0.3%		-1.5%		-0.3%	
Hispanic/Latino		12.9%		7.7%		8.6%		7.3%		9.1%	
White		58.8%		72.3%		69.3%		69.6%		62.3%	
Black/ African American		3.2%		1.7%		1.0%		0.8%		1.2%	
American Indian/ Alaska Native		0.2%		0.1%		0.1%		0.1%		0.1%	
Asian		17.3%		13.1%		12.8%		14.4%		18.8%	
Native Hawaiian/ Other Pacific Islander		0.2%		0.2%		0.1%		0.1%		0.2%	
Other		0.8%		0.5%		0.6%		0.6%		0.6%	
Two or More Races		6.5%		4.5%		7.5%		7.0%		7.6%	

Map 1 – CVAP Data



Citizens by Voting Age Population Estimate (2019-2023)

	Trustee Area 1	Trustee Area 2	Trustee Area 3	Trustee Area 4	Trustee Area 5
Population	17,750	19,444	17,242	16,469	16,666
Hispanic/Latino	12.2%	6.3%	7.4%	6.3%	9.3%
White	67.3%	78.1%	75.9%	76.8%	67.9%
Black/ African American	3.0%	2.1%	1.8%	1.1%	0.7%
American Indian/ Alaska Native	0.3%	0.1%	0.2%	0.0%	0.3%
Asian	13.0%	10.2%	11.2%	11.2%	18.4%
Native Hawaiian/ Other Pacific Islander	0.1%	0.1%	0.0%	0.0%	0.2%
Other	N/A	N/A	N/A	N/A	N/A
Two or More Races	4.1%	3.1%	3.4%	4.6%	3.2%

Map 1 – Income Data



Household Income (2019-2023)					
	Trustee Area 1	Trustee Area 2	Trustee Area 3	Trustee Area 4	Trustee Area 5
Income Less Than \$20K	7.0%	3.6%	4.7%	5.4%	6.5%
Income \$20K - \$50K	9.2%	11.4%	7.9%	6.4%	5.2%
Income \$50K - \$75K	7.6%	8.2%	4.7%	5.1%	5.9%
Income \$75K - \$100K	10.5%	10.8%	7.3%	3.5%	5.5%
Income \$100K - \$200K	35.4%	27.2%	25.5%	20.9%	23.9%
Income Over \$200K	30.3%	38.8%	49.9%	58.7%	53.1%

Map Option 2

**Election
Sequencing**
Area 1 – 2026
Area 2 – 2026
Area 3 – 2028
Area 4 – 2028
Area 5 – 2026

Area 1 – 2026

Area 2 – 2026

Area 3 – 2028

Area 4 – 2028

Area 5 – 2026



0 1 2 4 Miles

Acalanes UHSD

 AUHSD Schools

Proposed Trustee Areas

Trustee Area No. 1

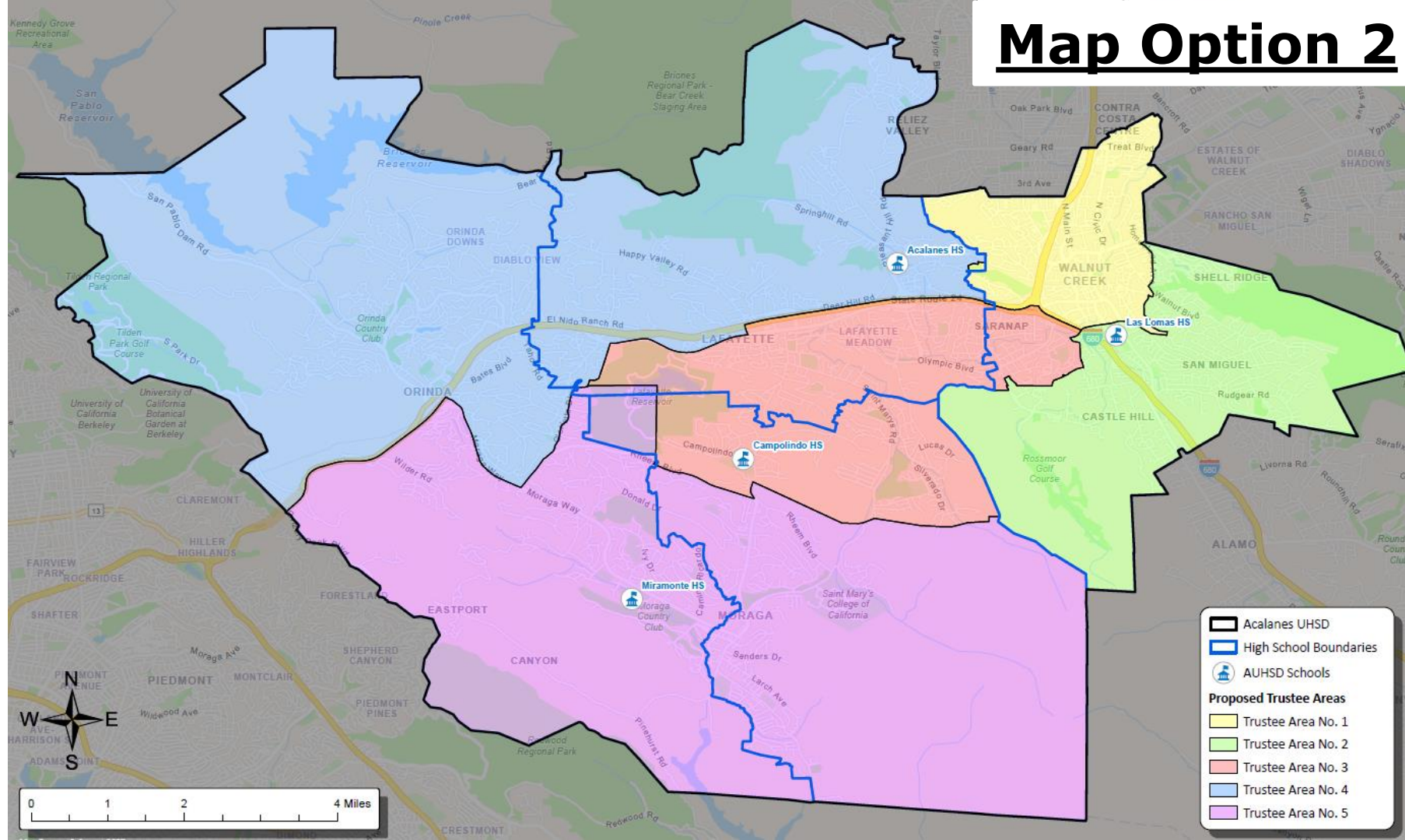
Trustee Area No. 2

NAME _____

Trustee Area NO. 3

Trustee Area No. 4

Map Option 2





Map Option 2


Legend:

- Acalanes UHSD
- Feeder District ES Attendance Boundaries
- AUHSD Schools






Proposed Trustee Areas

- Trustee Area No. 1
- Trustee Area No. 2
- Trustee Area No. 3
- Trustee Area No. 4
- Trustee Area No. 5

 Acalanes UHSD
 Feeder District ES
 Attendance Boundaries

 AUHSD Schools

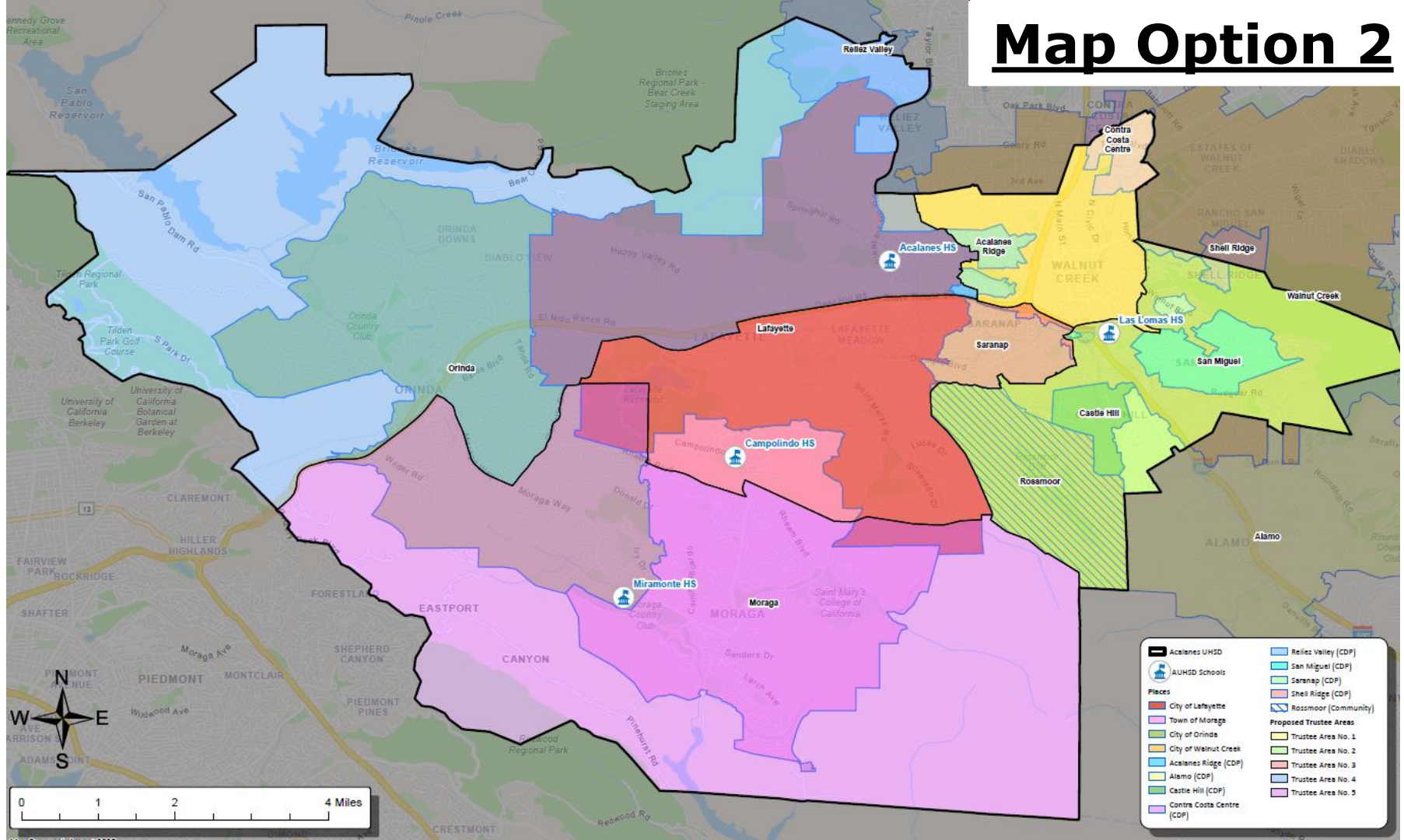
Proposed Trustee Areas

-  Trustee Area No. 1
 Trustee Area No. 2
 Trustee Area No. 3
 Trustee Area No. 4
 Trustee Area No. 5



0 1 2 4 Miles

Map Option 2



Map 2 – Total Population Data



Total Population:		119,039	Ideal Population:		23,808	Variance:		8.7%			
Total Population (2020 Census)											
	Trustee Area 1		Trustee Area 2		Trustee Area 3		Trustee Area 4		Trustee Area 5		
Population		24,123		24,902		23,102		24,072		22,840	
Population Variance		315		1,094		-706		264		-968	
		1.3%		4.6%		-3.0%		1.1%		-4.1%	
Hispanic/Latino		13.0%		7.7%		9.2%		6.6%		9.3%	
White		57.6%		72.5%		68.7%		70.9%		62.5%	
Black/ African American		3.2%		1.7%		1.0%		0.7%		1.3%	
American Indian/ Alaska Native		0.2%		0.1%		0.1%		0.1%		0.1%	
Asian		18.4%		12.8%		13.0%		14.0%		18.5%	
Native Hawaiian/ Other Pacific Islander		0.2%		0.2%		0.1%		0.1%		0.2%	
Other		0.8%		0.5%		0.6%		0.6%		0.6%	
Two or More Races		6.7%		4.7%		7.4%		7.0%		7.6%	

Map 2 – CVAP Data



Citizens by Voting Age Population Estimate (2019-2023)

	Trustee Area 1	Trustee Area 2	Trustee Area 3	Trustee Area 4	Trustee Area 5
Population	18,685	19,690	15,810	17,449	15,937
Hispanic/Latino	13.1%	5.6%	8.1%	5.1%	9.7%
White	65.1%	79.2%	74.3%	79.8%	67.4%
Black/ African American	3.5%	2.1%	1.6%	0.6%	0.7%
American Indian/ Alaska Native	0.4%	0.1%	0.1%	0.0%	0.3%
Asian	13.9%	10.2%	11.0%	10.7%	18.6%
Native Hawaiian/ Other Pacific Islander	0.1%	0.1%	0.0%	0.0%	0.2%
Other	N/A	N/A	N/A	N/A	N/A
Two or More Races	4.0%	2.8%	4.9%	3.7%	3.1%

Map 2 – Income Data



Household Income (2019-2023)					
	Trustee Area 1	Trustee Area 2	Trustee Area 3	Trustee Area 4	Trustee Area 5
Income Less Than \$20K	6.5%	4.1%	5.1%	5.4%	6.5%
Income \$20K - \$50K	11.5%	10.8%	6.7%	5.3%	5.5%
Income \$50K - \$75K	7.3%	7.8%	6.6%	4.6%	5.2%
Income \$75K - \$100K	9.7%	10.3%	8.1%	3.9%	5.3%
Income \$100K - \$200K	34.6%	27.9%	27.1%	19.6%	24.4%
Income Over \$200K	30.4%	39.2%	46.4%	61.2%	53.1%

Map Option 3

Election Sequencing

Area 1 – 2026

Area 2 – 2026

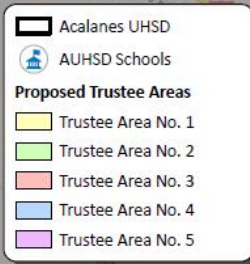
Area 3 – 2028

Area 4 – 2028

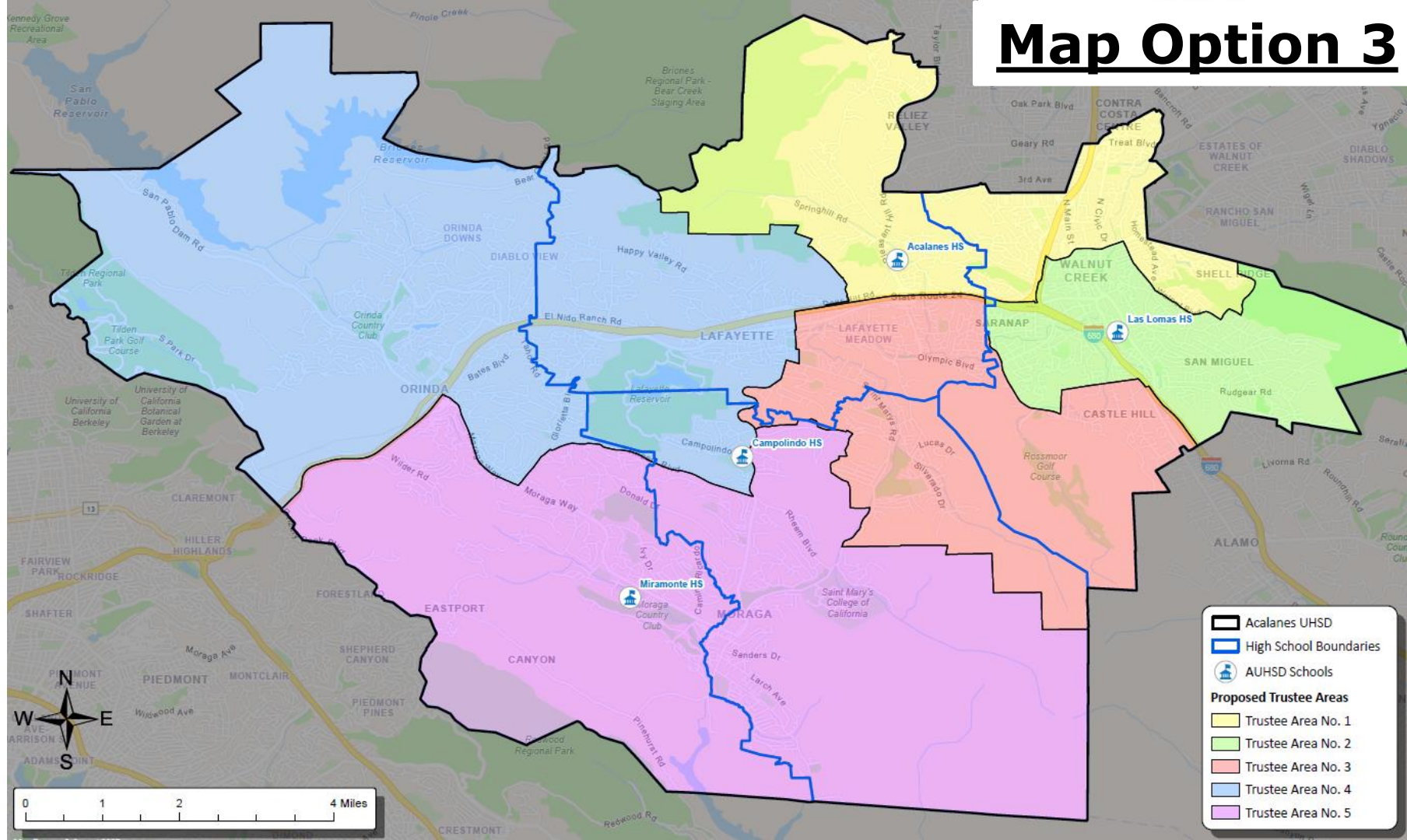
Area 5 – 2026



0 1 2 4 Miles



Map Option 3



Map Option 3

Legend:

- Acalanes UHSD
- Feeder District ES Attendance Boundaries
- AUHSD Schools
- Proposed Trustee Areas**
 - Trustee Area No. 1
 - Trustee Area No. 2
 - Trustee Area No. 3
 - Trustee Area No. 4
 - Trustee Area No. 5

Map Labels:

Geographical Features: San Pablo Reservoir, Briones Regional Park - Bear Creek Sliding Area, Tilden Regional Park, University of California Botanical Garden at Berkeley, Redwood Regional Park.



Highways: SR 92, SR 880, SR 892, SR 13.


Neighboring Districts: CONTRA COSTA COUNTY, ESTATES OF WALNUT CREEK, RANCHO SAN MIGUEL, ALAMO.

Schools and Districts: Springhill ES (LSD), Acalanes HS, Buena Vista ES (WCSD), Indian Valley ES (WCSD), Las Lomas HS, Walnut Heights ES (WCSD), Murwood ES (WCSD), Castle Hill, Parkmead ES (WCSD), Lafayette ES (LSD), Campolindo HS, Burton Valley ES (LSD), Donald Rheem ES (MSD), Los Perales ES (MSD), Saint Mary's College of California, Camino Pablo ES (MSD), Miramonte HS, Del Rey ES (OUSD), Canyon ES (CESD), Wagner Ranch ES (OUSD), Happy Valley ES (LSD), Glorietta ES (OUSD), Orinda Downs, Diablo View, Orinda, Lafayette, Saranap, Walnut Creek, Shell Ridge, San Miguel, Alamo.

Scale: 0 to 4 Miles.


Compass Rose: N, S, E, W.


 Acalanes UHSD
 Feeder District ES
 Attendance Boundaries


 AUHSD Schools

Proposed Trustee Areas

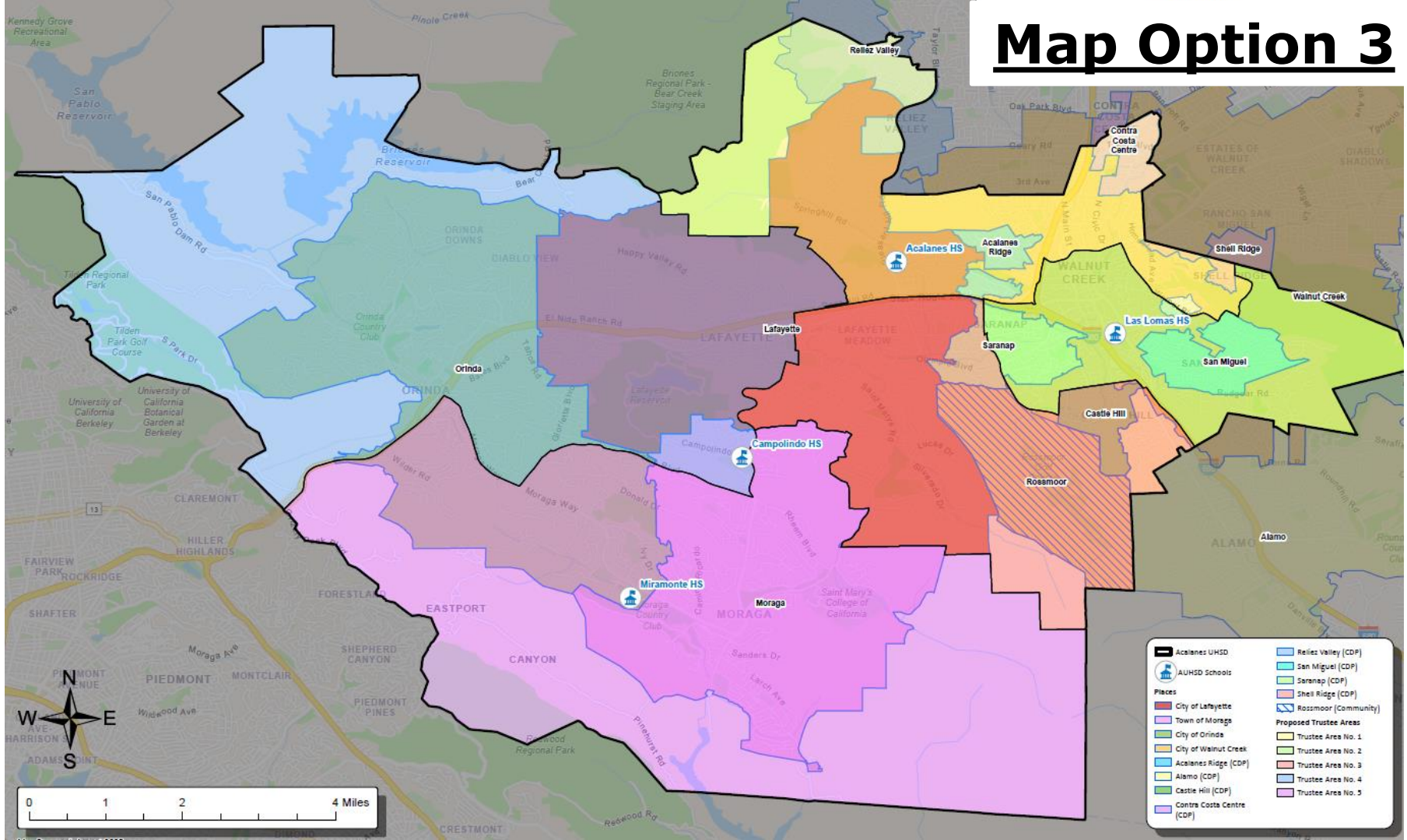
 Trustee Area No. 1

 Trustee Area No. 2

 Trustee Area No. 3

 Trustee Area No. 4

Map Option 3



Map 3 – Total Population Data



F3 Law

Total Population:		119,039	Ideal Population:		23,808	Variance:		7.9%			
Total Population (2020 Census)											
	Trustee Area 1		Trustee Area 2		Trustee Area 3		Trustee Area 4		Trustee Area 5		
Population		23,800		24,379		24,244		24,108		22,508	
Population Variance		-8		571		436		300		-1,300	
		0.0%		2.4%		1.8%		1.3%		-5.5%	
Hispanic/Latino		10.3%		12.2%		6.7%		7.2%		9.2%	
White		62.0%		64.7%		74.0%		69.1%		62.2%	
Black/ African American		2.3%		2.7%		0.8%		0.8%		1.3%	
American Indian/ Alaska Native		0.1%		0.1%		0.0%		0.1%		0.1%	
Asian		17.4%		13.3%		12.3%		15.0%		18.8%	
Native Hawaiian/ Other Pacific Islander		0.1%		0.2%		0.1%		0.0%		0.2%	
Other		0.9%		0.6%		0.5%		0.6%		0.6%	
Two or More Races		6.8%		6.3%		5.5%		7.2%		7.6%	

Map 3 – CVAP Data



Citizens by Voting Age Population Estimate (2019-2023)

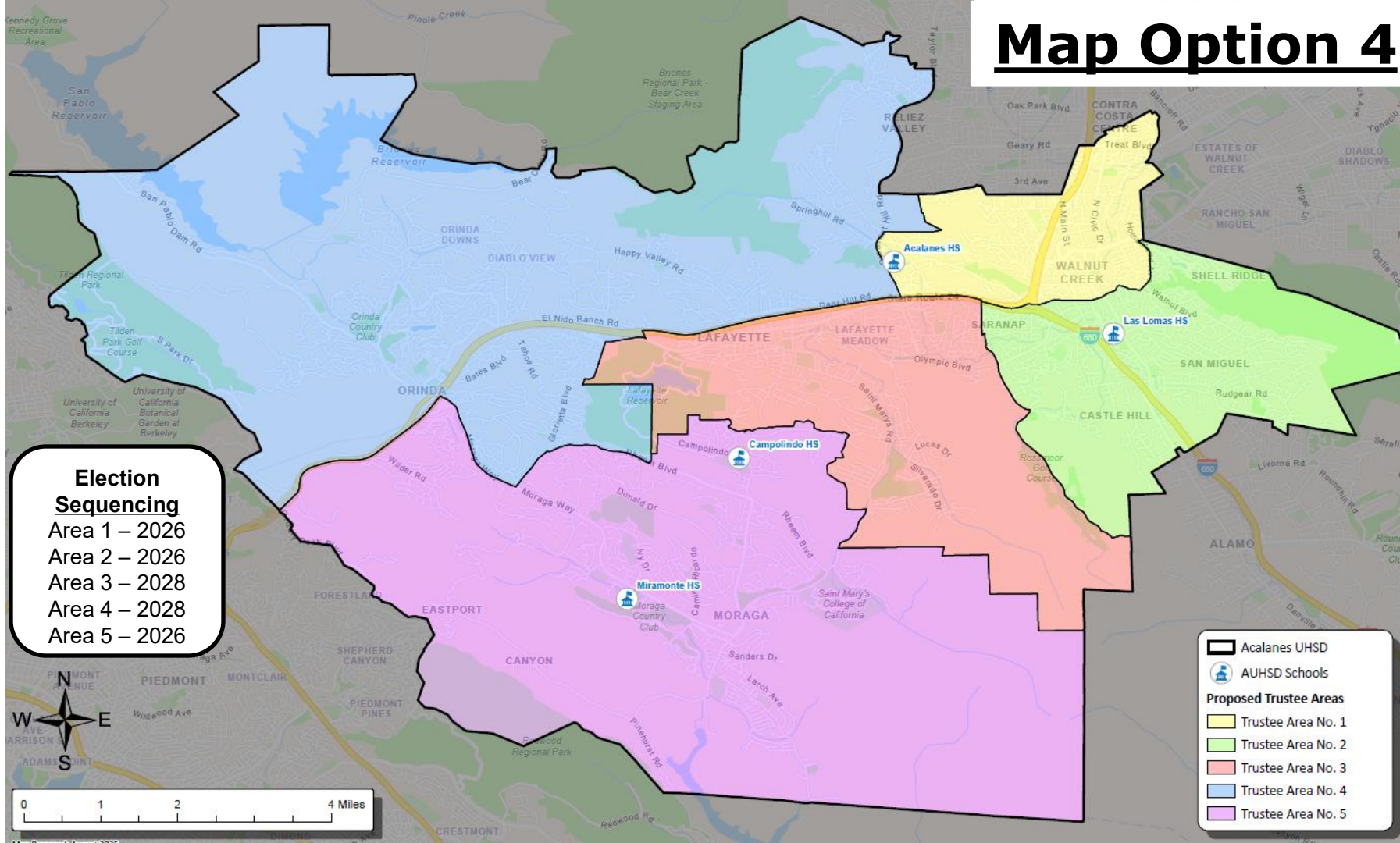
	Trustee Area 1	Trustee Area 2	Trustee Area 3	Trustee Area 4	Trustee Area 5
Population	17,543	18,902	18,477	16,867	15,782
Hispanic/Latino	12.3%	9.3%	4.3%	6.1%	9.6%
White	66.7%	72.6%	82.3%	76.5%	67.5%
Black/ African American	3.5%	2.5%	1.0%	0.9%	0.8%
American Indian/ Alaska Native	0.4%	0.0%	0.1%	0.0%	0.3%
Asian	12.8%	11.6%	9.9%	11.8%	18.4%
Native Hawaiian/ Other Pacific Islander	0.0%	0.1%	0.1%	0.0%	0.2%
Other	N/A	N/A	N/A	N/A	N/A
Two or More Races	4.2%	3.9%	2.3%	4.8%	3.2%

Map 3 – Income Data

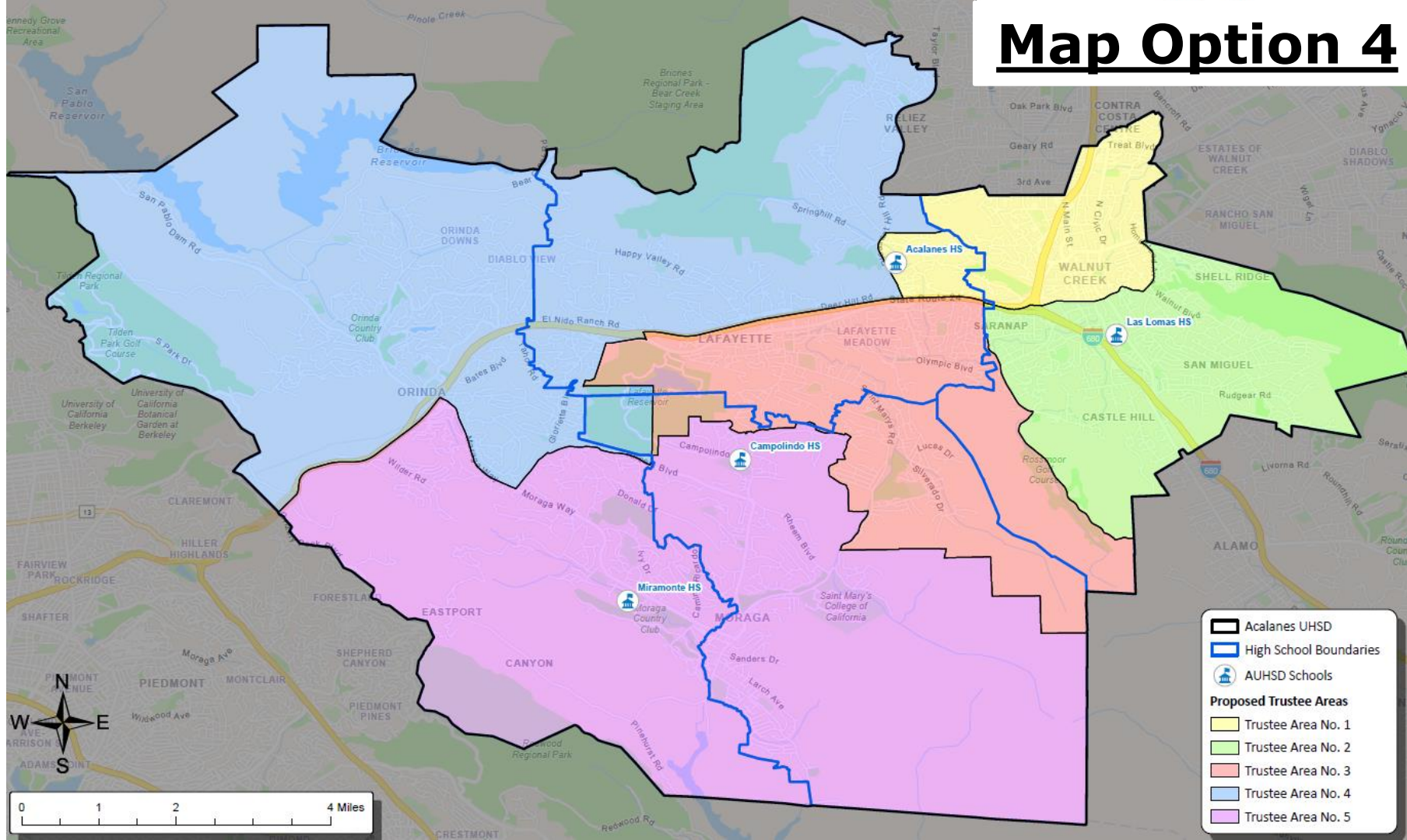


Household Income (2019-2023)					
	Trustee Area 1	Trustee Area 2	Trustee Area 3	Trustee Area 4	Trustee Area 5
Income Less Than \$20K	5.9%	4.8%	4.8%	5.5%	6.8%
Income \$20K - \$50K	9.9%	7.2%	10.6%	6.3%	5.3%
Income \$50K - \$75K	4.9%	8.5%	6.6%	5.7%	5.2%
Income \$75K - \$100K	6.3%	11.6%	9.7%	3.8%	5.5%
Income \$100K - \$200K	29.7%	34.4%	24.4%	20.9%	24.2%
Income Over \$200K	43.3%	33.5%	43.9%	57.8%	53.0%

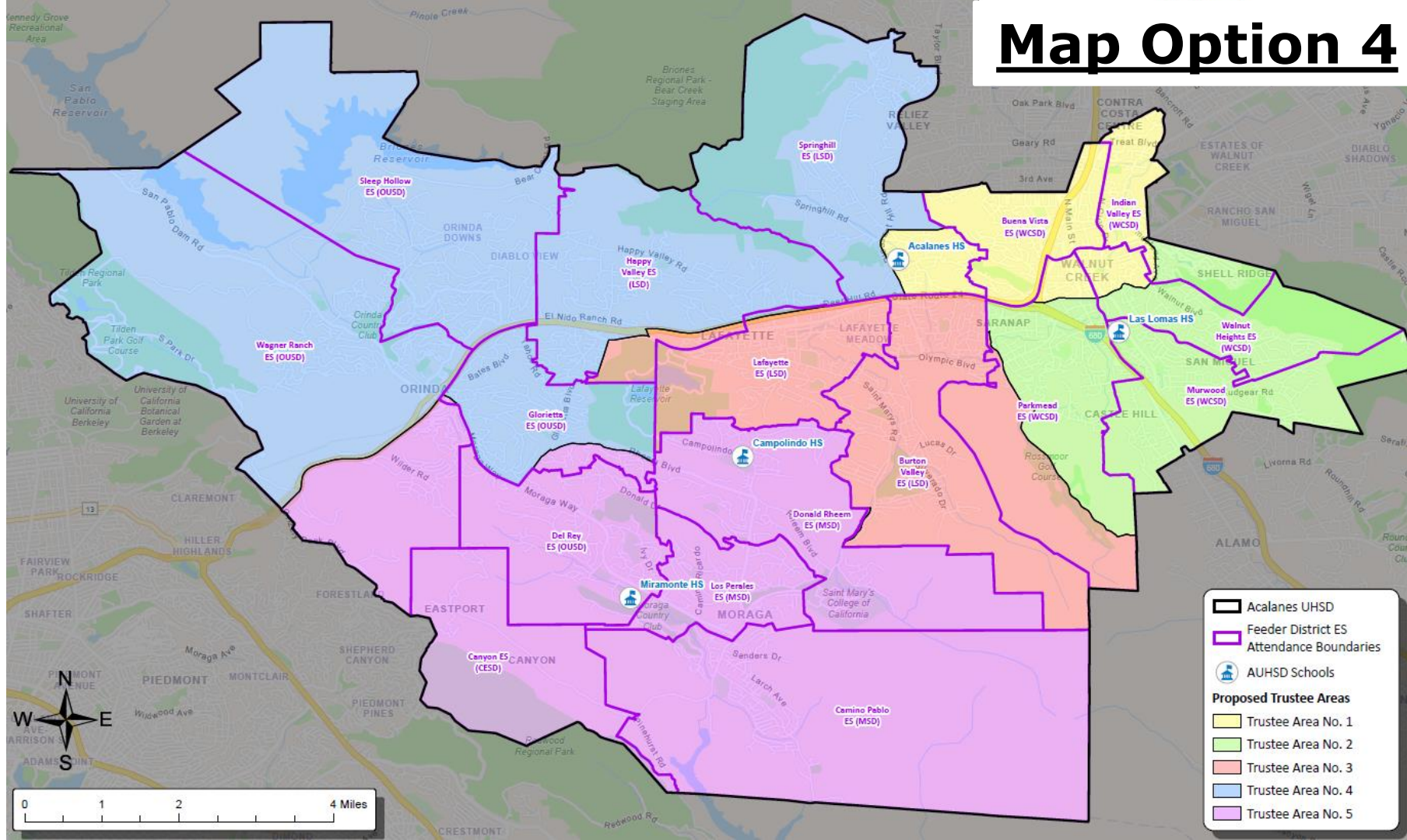
Map Option 4



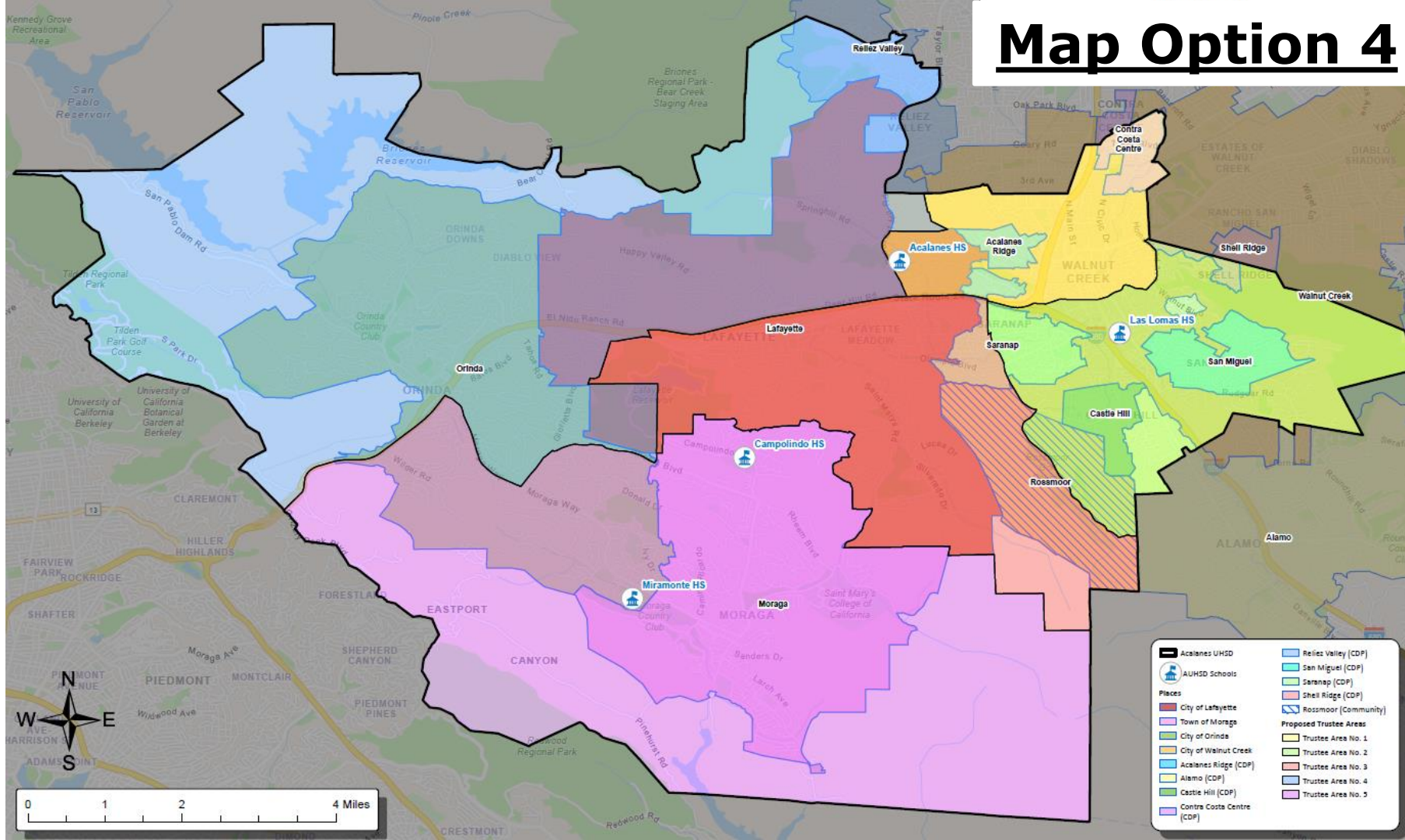
Map Option 4



Map Option 4



Map Option 4



Map 4 – Total Population Data



F3 Law

Total Population:		119,039	Ideal Population:		23,808	Variance:		5.2%
Total Population (2020 Census)								
	Trustee Area 1	Trustee Area 2	Trustee Area 3	Trustee Area 4	Trustee Area 5			
Population	23,533	24,236	24,183	22,997	24,090			
Population Variance	-275	428	375	-811	282			
	-1.2%	1.8%	1.6%	-3.4%	1.2%			
Hispanic/Latino	12.5%	10.1%	7.5%	6.5%	9.0%			
White	57.8%	68.7%	72.5%	71.3%	62.3%			
Black/ African American	3.0%	2.1%	0.8%	0.7%	1.2%			
American Indian/ Alaska Native	0.1%	0.1%	0.1%	0.1%	0.1%			
Asian	18.8%	12.3%	12.6%	13.8%	19.0%			
Native Hawaiian/ Other Pacific Islander	0.2%	0.2%	0.1%	0.1%	0.2%			
Other	0.8%	0.6%	0.6%	0.5%	0.6%			
Two or More Races	6.7%	5.9%	5.9%	7.0%	7.7%			

Map 4 – CVAP Data

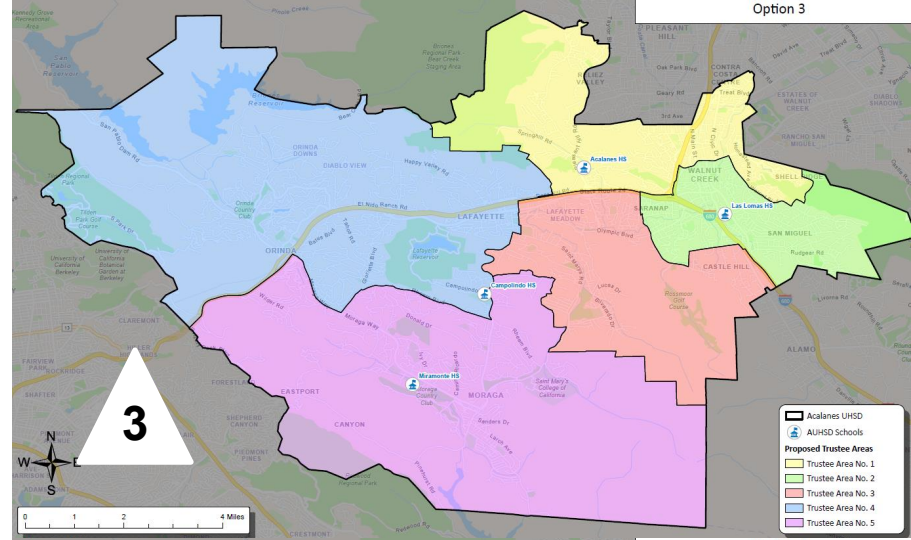
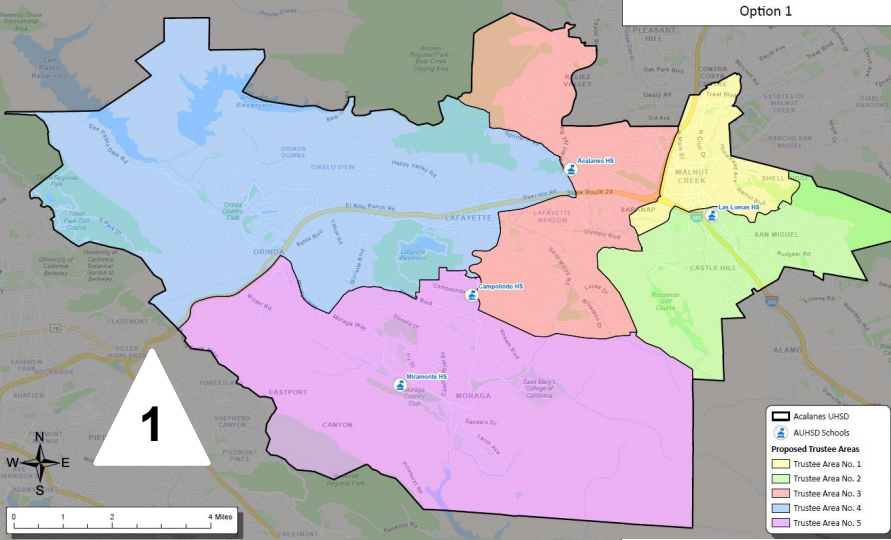
Citizens by Voting Age Population Estimate (2019-2023)					
	Trustee Area 1	Trustee Area 2	Trustee Area 3	Trustee Area 4	Trustee Area 5
Population	18,134	17,948	18,016	16,594	16,879
Hispanic/Latino	13.0%	8.3%	5.7%	5.0%	9.2%
White	65.3%	74.1%	79.7%	79.7%	67.9%
Black/ African American	3.6%	2.4%	1.3%	0.7%	0.7%
American Indian/ Alaska Native	0.4%	0.0%	0.1%	0.0%	0.3%
Asian	13.7%	11.0%	9.9%	10.9%	18.4%
Native Hawaiian/ Other Pacific Islander	0.1%	0.0%	0.1%	0.0%	0.2%
Other	N/A	N/A	N/A	N/A	N/A
Two or More Races	3.9%	4.1%	3.2%	3.7%	3.4%

Map 4 – Income Data

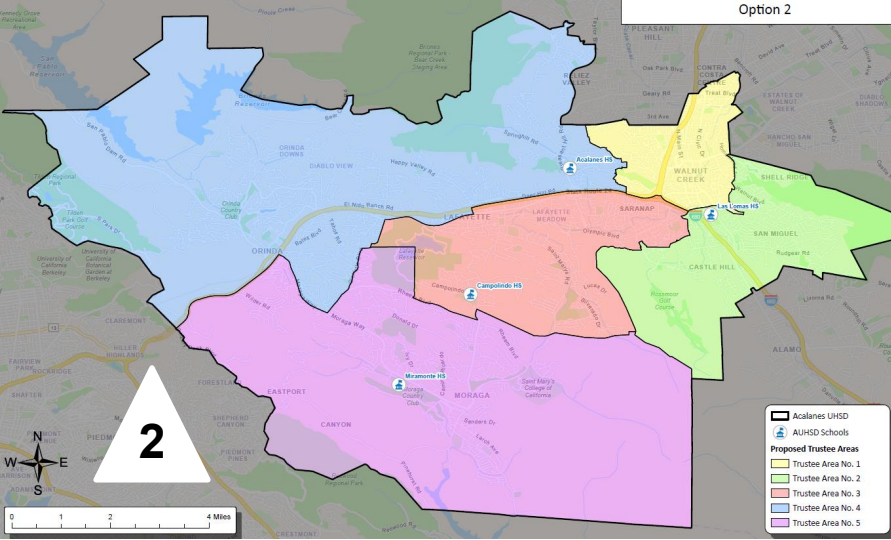


Household Income (2019-2023)					
	Trustee Area 1	Trustee Area 2	Trustee Area 3	Trustee Area 4	Trustee Area 5
Income Less Than \$20K	6.7%	3.9%	5.1%	5.3%	6.6%
Income \$20K - \$50K	11.5%	7.0%	10.6%	5.2%	5.3%
Income \$50K - \$75K	6.4%	7.8%	6.7%	4.7%	5.9%
Income \$75K - \$100K	9.5%	8.8%	9.1%	3.9%	5.6%
Income \$100K - \$200K	34.2%	30.7%	25.8%	19.4%	23.8%
Income Over \$200K	31.7%	41.7%	42.8%	61.5%	52.9%

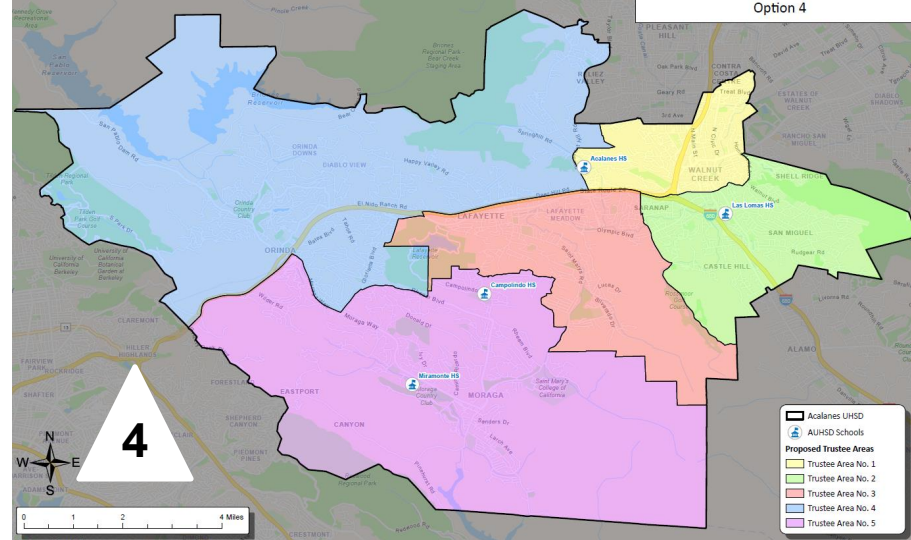
Option 1



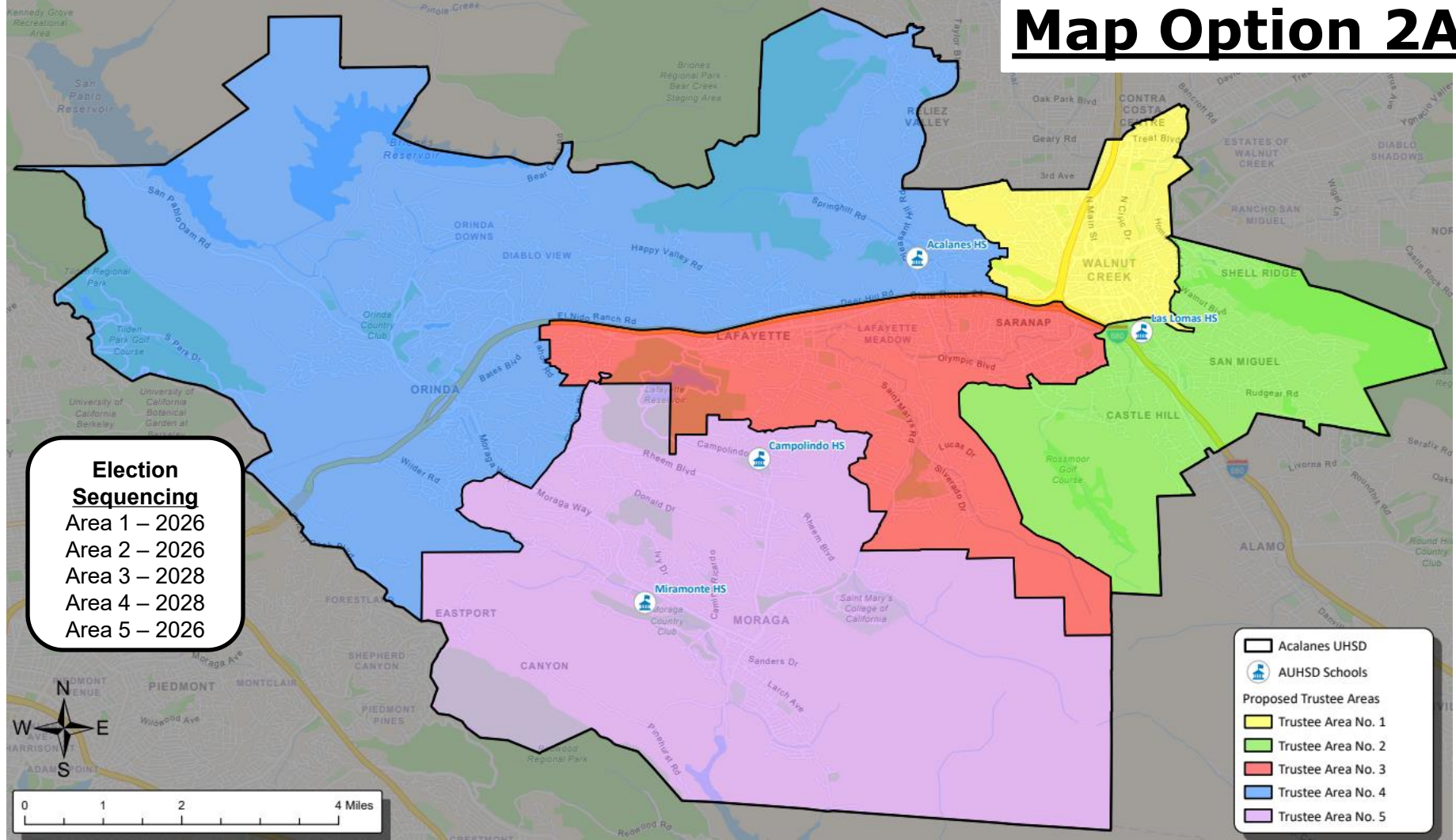
Option 2



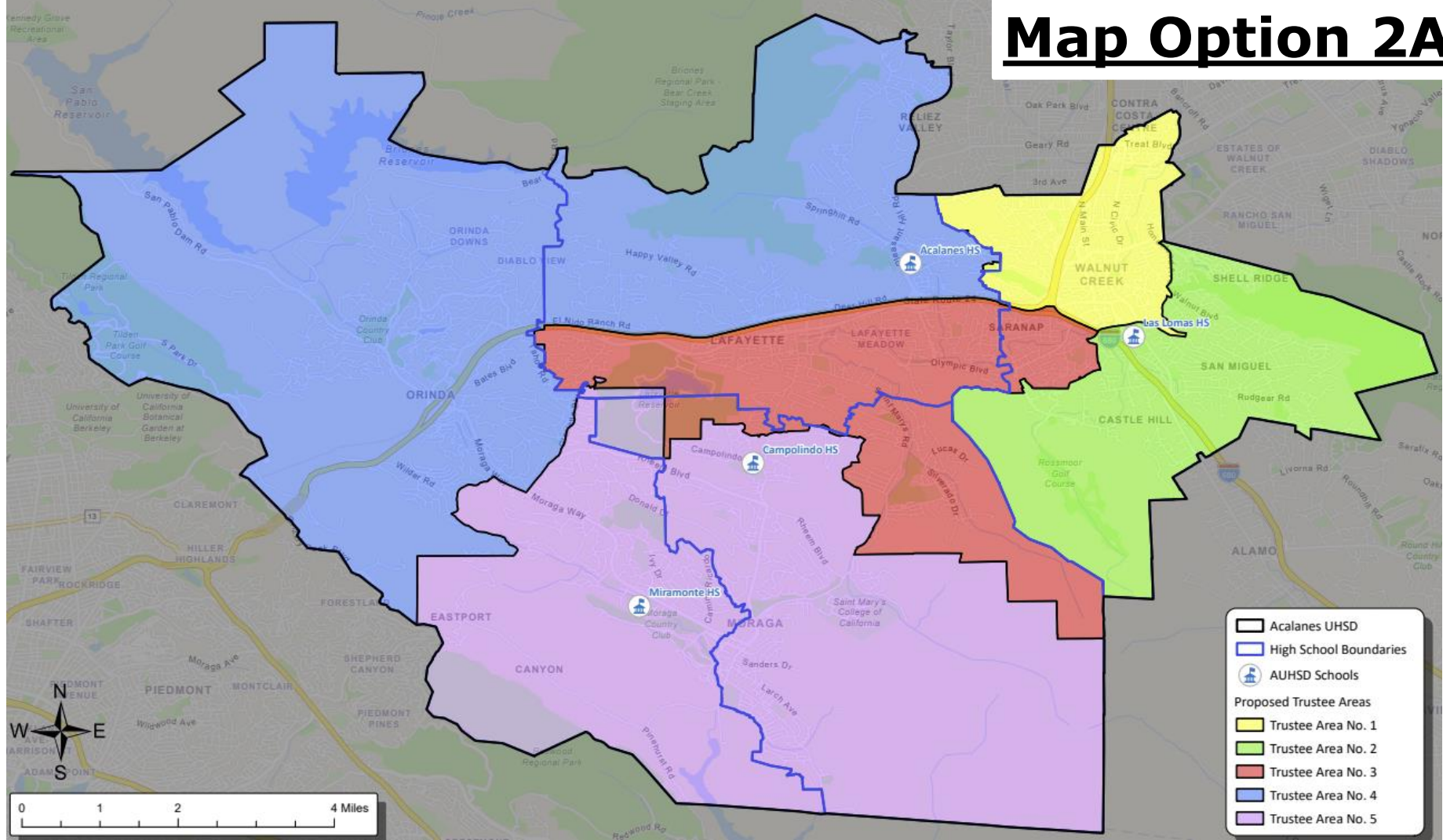
Option 4



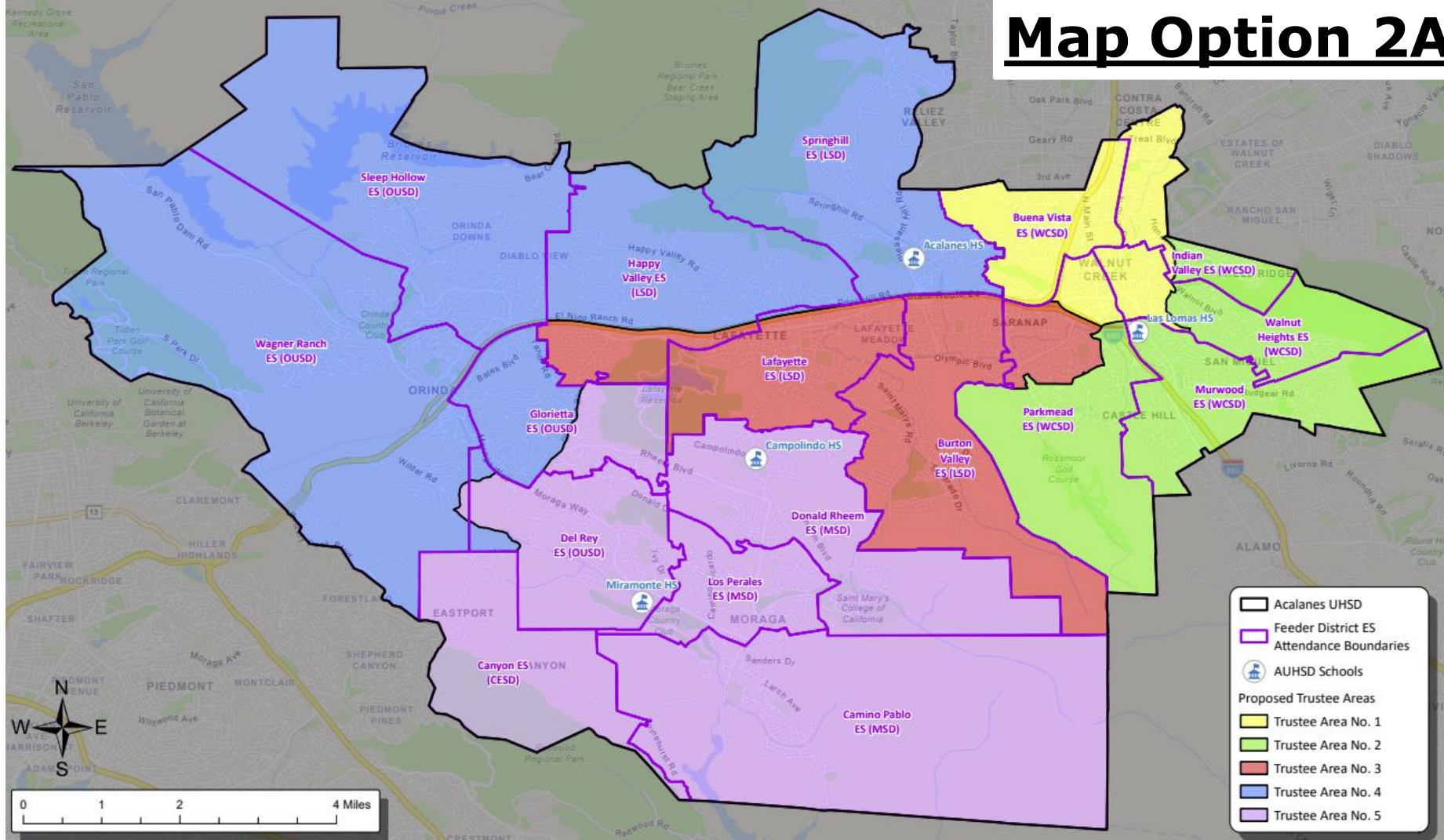
Map Option 2A



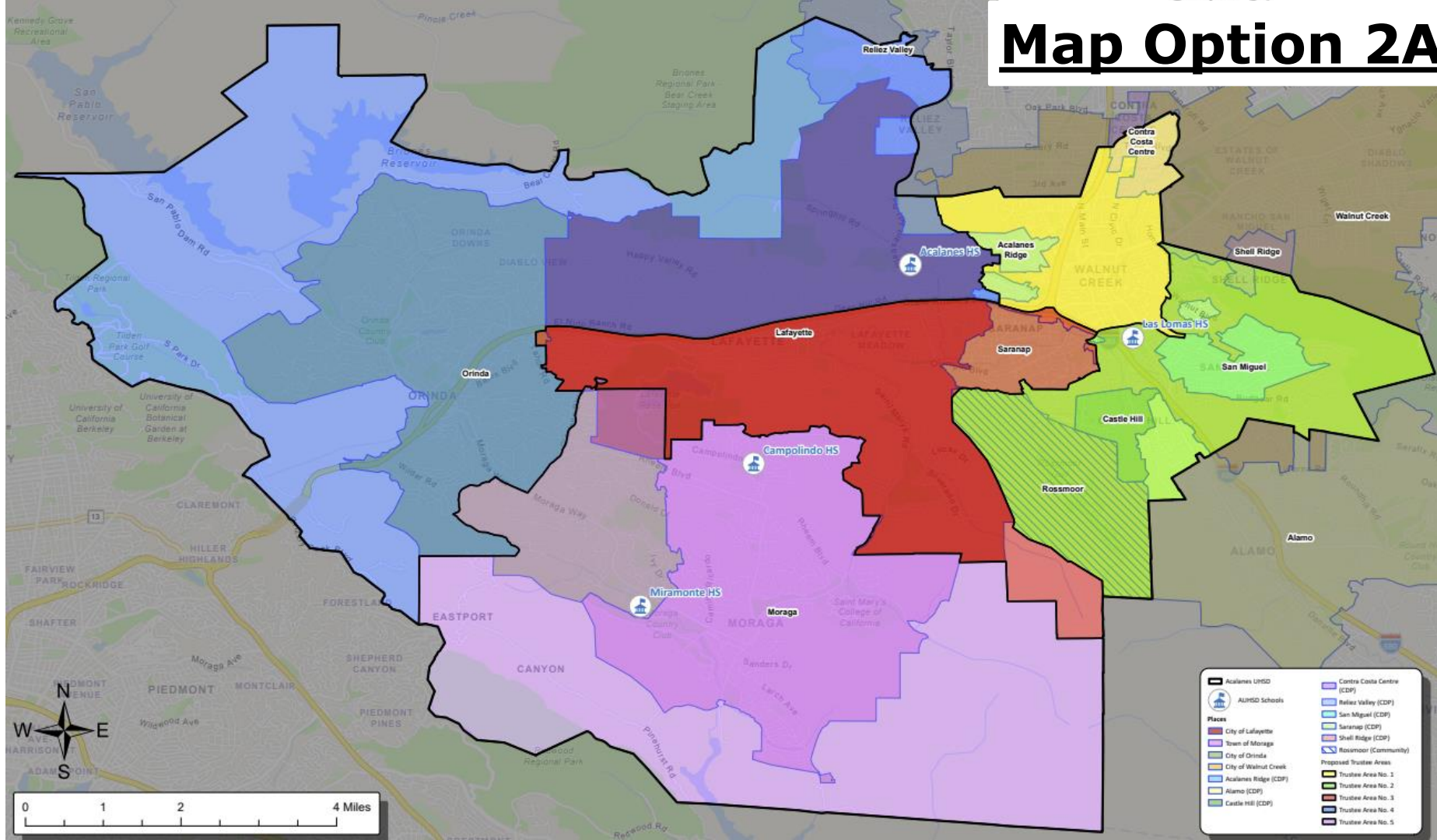
Map Option 2A



Map Option 2A



Map Option 2A



Map 2A – Total Population Data



F3 Law

Total Population:		119,039	Ideal Population:		23,808	Variance:		8.7%
Total Population (2020 Census)								
	Trustee Area 1	Trustee Area 2	Trustee Area 3	Trustee Area 4	Trustee Area 5			
Population	24,123	24,902	22,835	24,023	23,156			
Population Variance	315	1,094	-973	215	-652			
	1.3%	4.6%	-4.1%	0.9%	-2.7%			
Hispanic/Latino	13.0%	7.7%	9.5%	6.6%	9.0%			
White	57.6%	72.5%	69.4%	69.6%	63.2%			
Black/ African American	3.2%	1.7%	1.0%	0.8%	1.1%			
American Indian/ Alaska Native	0.2%	0.1%	0.1%	0.1%	0.1%			
Asian	18.4%	12.8%	12.1%	15.0%	18.3%			
Native Hawaiian/ Other Pacific Islander	0.2%	0.2%	0.1%	0.1%	0.2%			
Other	0.8%	0.5%	0.6%	0.6%	0.5%			
Two or More Races	6.7%	4.7%	7.2%	7.2%	7.6%			

Map 2A – CVAP Data

Citizens by Voting Age Population Estimate (2019-2023)					
	Trustee Area 1	Trustee Area 2	Trustee Area 3	Trustee Area 4	Trustee Area 5
Population	18,685	19,690	15,429	17,498	16,269
Hispanic/Latino	13.1%	5.6%	8.6%	5.1%	9.2%
White	65.1%	79.2%	74.5%	79.8%	67.3%
Black/ African American	3.5%	2.1%	1.7%	0.6%	0.7%
American Indian/ Alaska Native	0.4%	0.1%	0.1%	0.0%	0.3%
Asian	13.9%	10.2%	10.4%	10.9%	18.8%
Native Hawaiian/ Other Pacific Islander	0.1%	0.1%	0.0%	0.0%	0.2%
Other	N/A	N/A	N/A	N/A	N/A
Two or More Races	4.0%	2.8%	4.8%	3.5%	3.5%

Map 2A – Income Data



Household Income (2019-2023)					
	Trustee Area 1	Trustee Area 2	Trustee Area 3	Trustee Area 4	Trustee Area 5
Income Less Than \$20K	6.5%	4.1%	4.8%	5.4%	6.8%
Income \$20K - \$50K	11.5%	10.8%	6.9%	5.3%	5.3%
Income \$50K - \$75K	7.3%	7.8%	5.8%	4.7%	5.9%
Income \$75K - \$100K	9.7%	10.3%	7.6%	3.9%	5.7%
Income \$100K - \$200K	34.6%	27.9%	27.0%	19.3%	25.0%
Income Over \$200K	30.4%	39.1%	47.9%	61.4%	51.3%

Map Option 2B

Election Sequencing

Area 1 – 2026

Area 2 – 2026

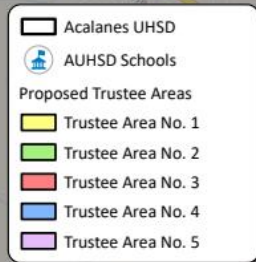
Area 3 – 2028

Area 4 – 2028

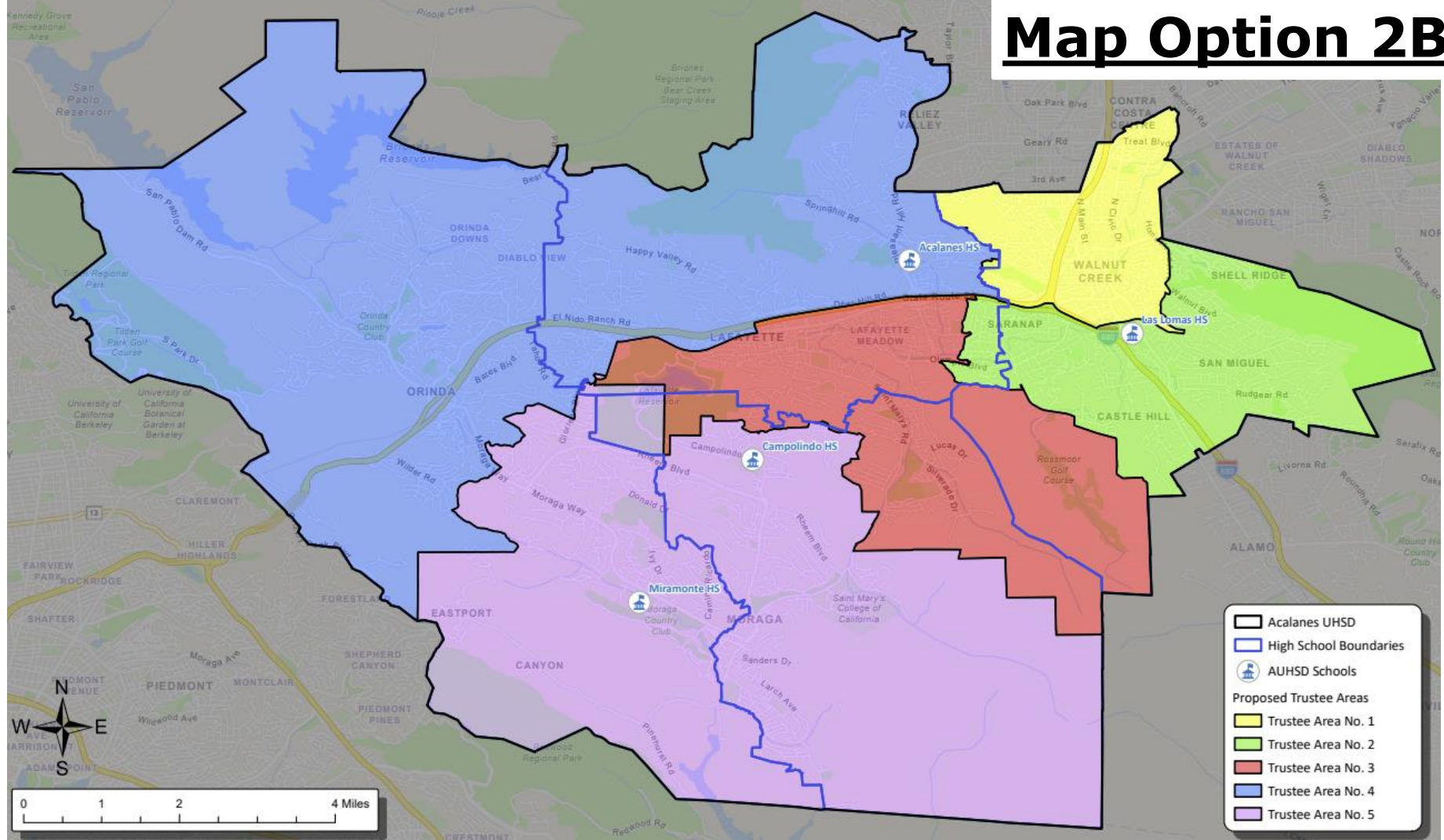
Area 5 – 2026



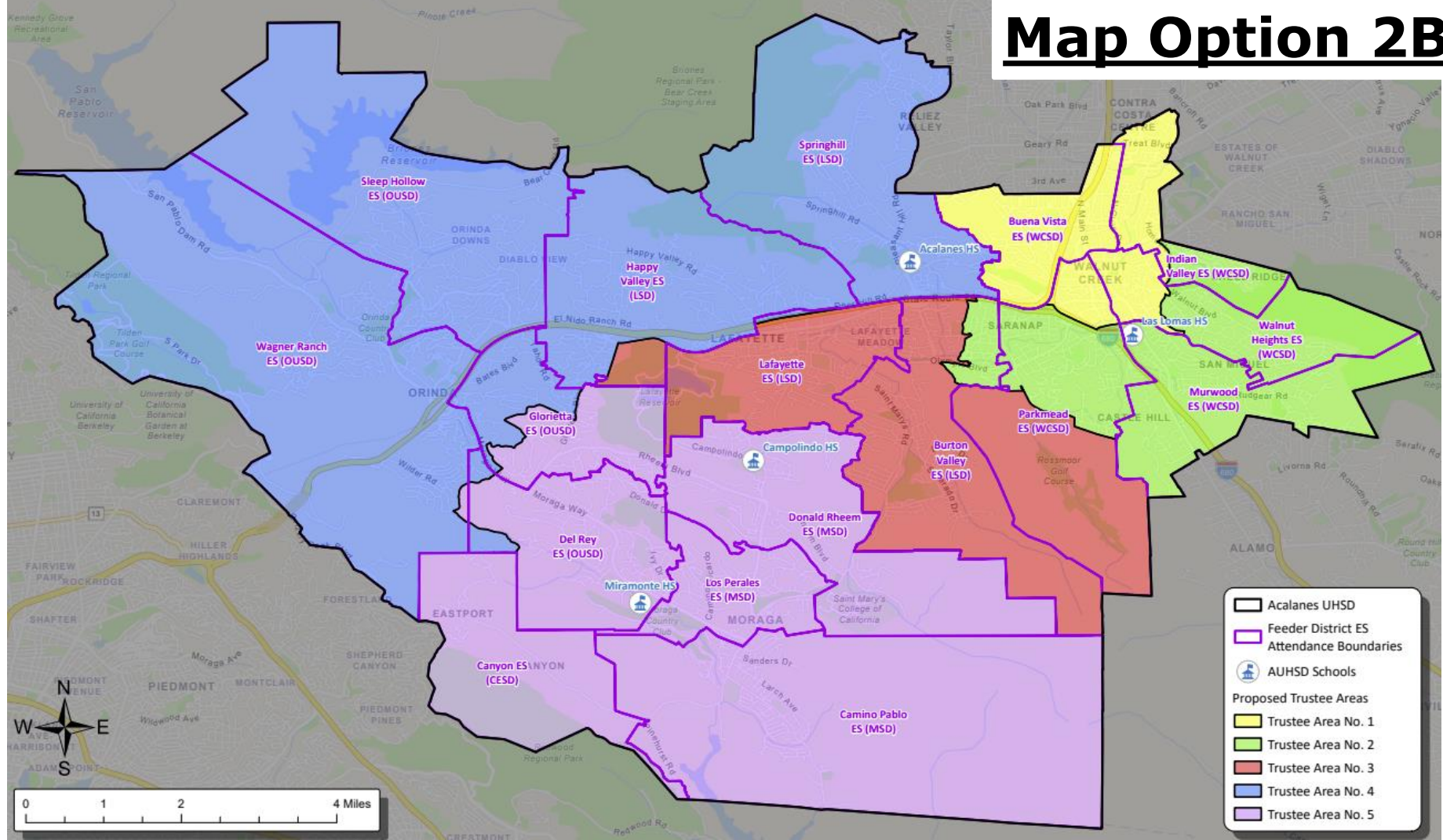
0 1 2 4 Miles



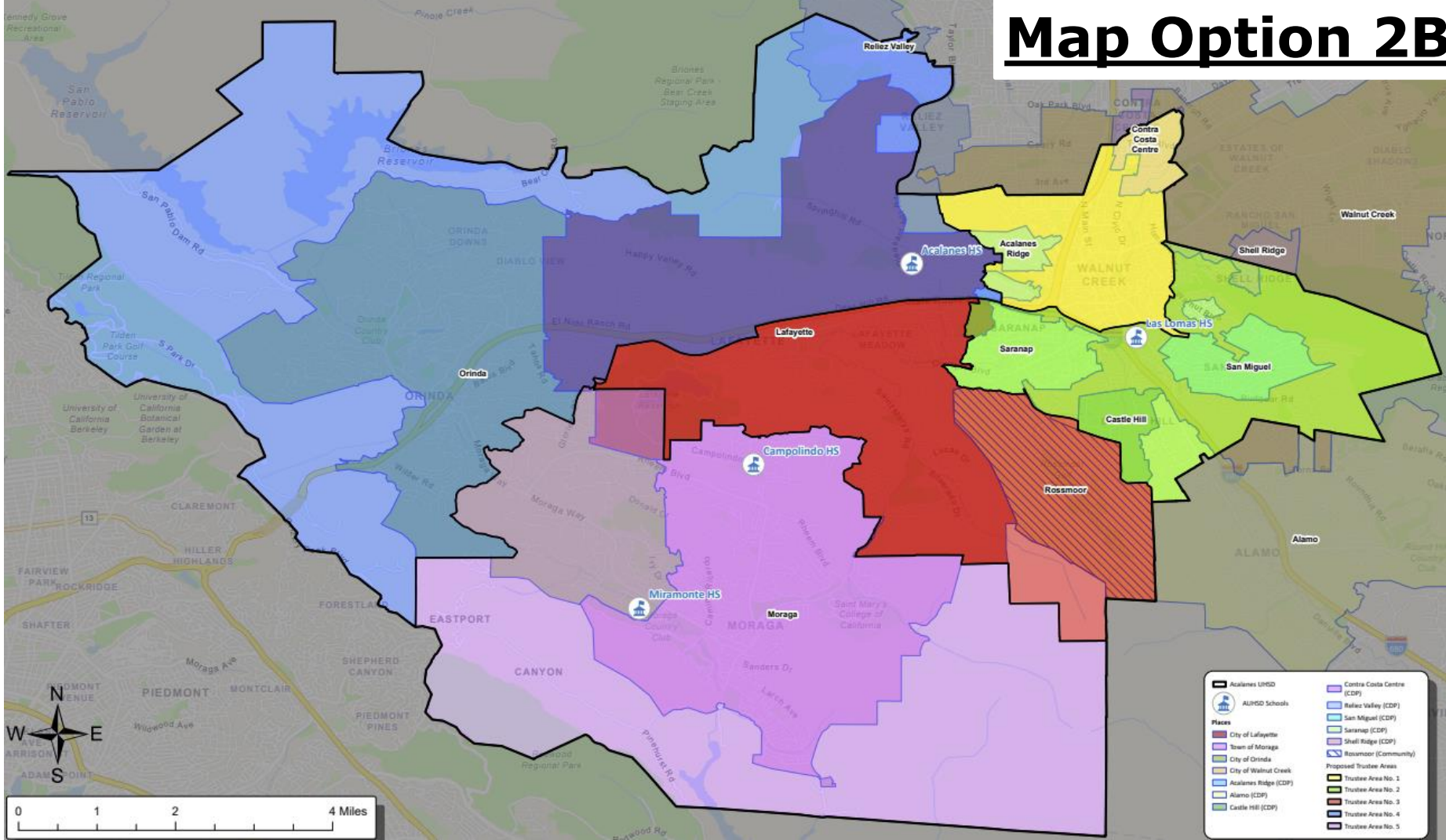
Map Option 2B



Map Option 2B



Map Option 2B



Map 2B – Total Population Data



Total Population:	119,039	Ideal Population:	23,808	Variance:	7.8%
--------------------------	----------------	--------------------------	---------------	------------------	-------------

Total Population (2020 Census)					
	Trustee Area 1	Trustee Area 2	Trustee Area 3	Trustee Area 4	Trustee Area 5
Population	24,123	22,595	23,502	24,446	24,373
Population Variance	315	-1,213	-306	638	565
	1.3%	-5.1%	-1.3%	2.7%	2.4%
Hispanic/Latino	13.0%	10.3%	6.8%	6.7%	8.9%
White	57.6%	68.6%	73.3%	69.7%	63.6%
Black/ African American	3.2%	1.9%	0.9%	0.8%	1.1%
American Indian/ Alaska Native	0.2%	0.1%	0.0%	0.1%	0.1%
Asian	18.4%	12.0%	12.9%	14.9%	18.1%
Native Hawaiian/ Other Pacific Islander	0.2%	0.2%	0.1%	0.1%	0.2%
Other	0.8%	0.7%	0.5%	0.6%	0.5%
Two or More Races	6.7%	6.4%	5.4%	7.1%	7.6%

Map 2B – CVAP Data

Citizens by Voting Age Population Estimate (2019-2023)					
	Trustee Area 1	Trustee Area 2	Trustee Area 3	Trustee Area 4	Trustee Area 5
Population	18,685	16,157	18,049	17,479	17,201
Hispanic/Latino	13.1%	8.1%	5.6%	5.2%	9.1%
White	65.1%	73.8%	80.1%	79.9%	67.7%
Black/ African American	3.5%	2.7%	1.3%	0.5%	0.9%
American Indian/ Alaska Native	0.4%	0.1%	0.1%	0.0%	0.3%
Asian	13.9%	10.6%	10.0%	10.8%	18.5%
Native Hawaiian/ Other Pacific Islander	0.1%	0.0%	0.1%	0.0%	0.2%
Other	N/A	N/A	N/A	N/A	N/A
Two or More Races	4.0%	4.7%	2.7%	3.6%	3.5%

Map 2B – Income Data



Household Income (2019-2023)					
	Trustee Area 1	Trustee Area 2	Trustee Area 3	Trustee Area 4	Trustee Area 5
Income Less Than \$20K	6.5%	3.4%	5.8%	5.2%	6.7%
Income \$20K - \$50K	11.5%	5.8%	11.8%	5.3%	5.4%
Income \$50K - \$75K	7.3%	6.0%	7.6%	4.7%	5.9%
Income \$75K - \$100K	9.7%	8.8%	9.3%	3.8%	5.7%
Income \$100K - \$200K	34.6%	29.7%	25.9%	19.2%	24.9%
Income Over \$200K	30.4%	46.3%	39.6%	61.8%	51.4%

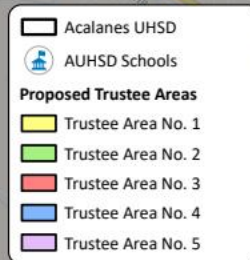
Map Option 5

Election Sequencing

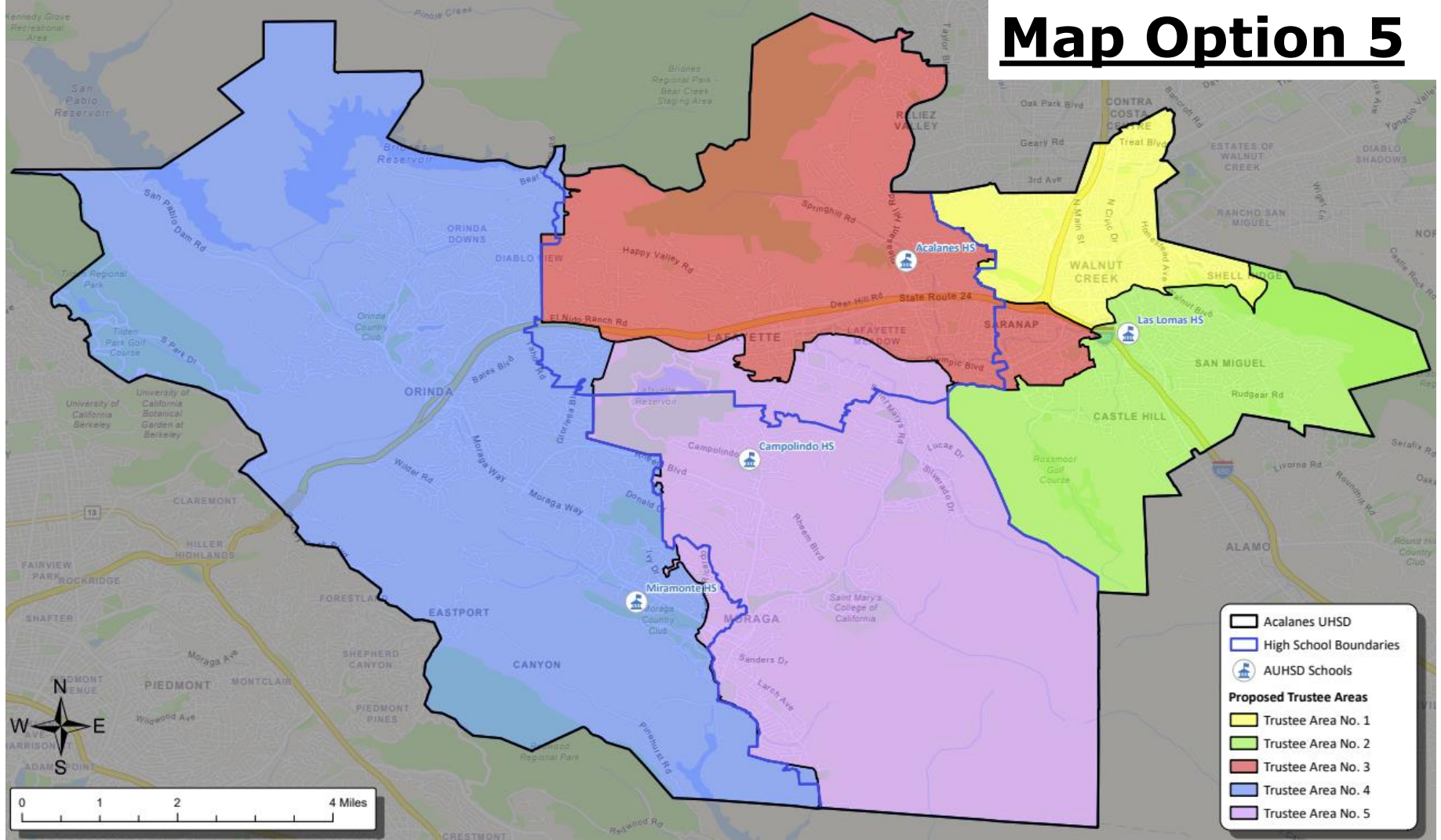
Area 1 – 2026
Area 2 – 2026
Area 3 – 2028
Area 4 – 2026
Area 5 – 2028



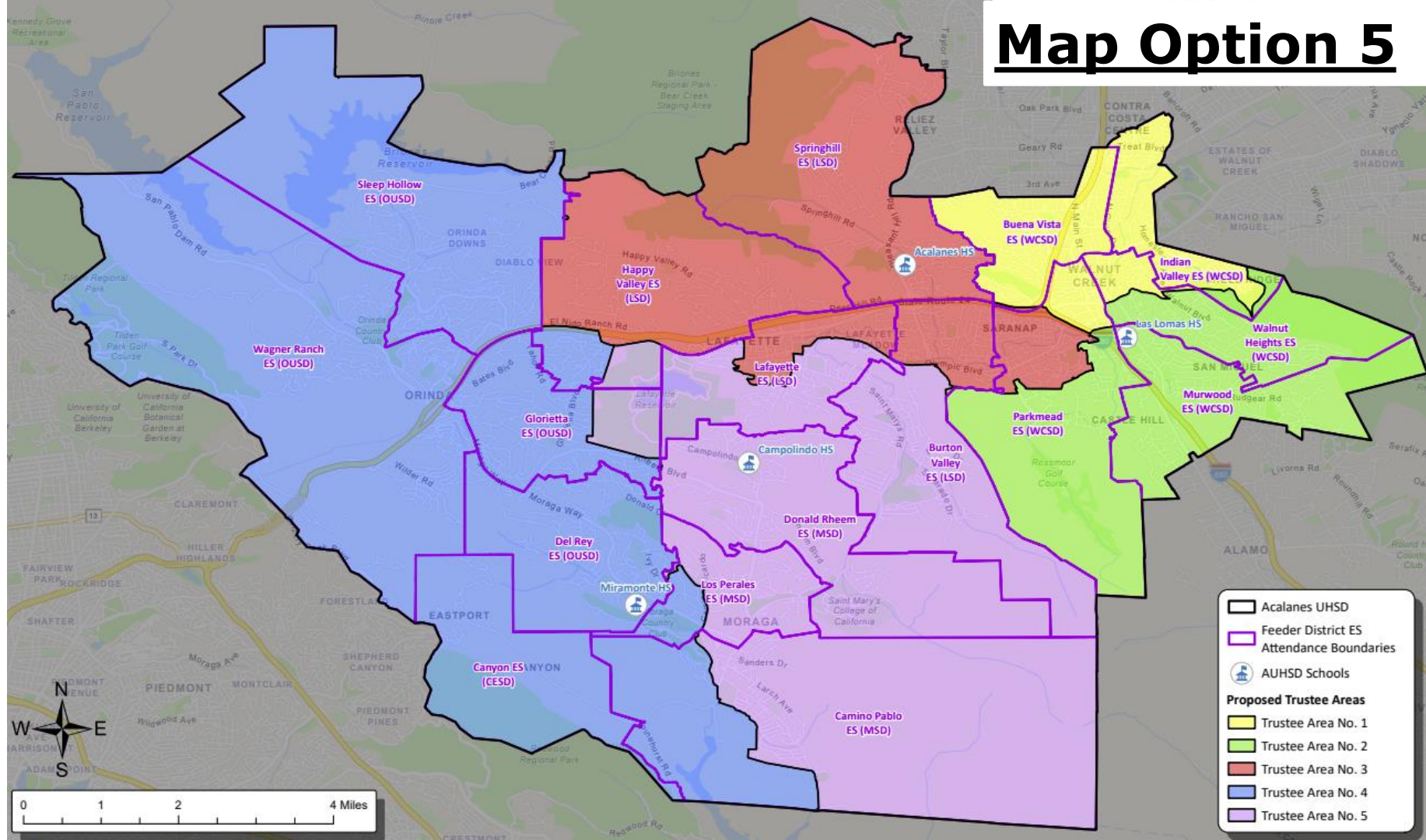
0	1	2	4 Miles
---	---	---	---------



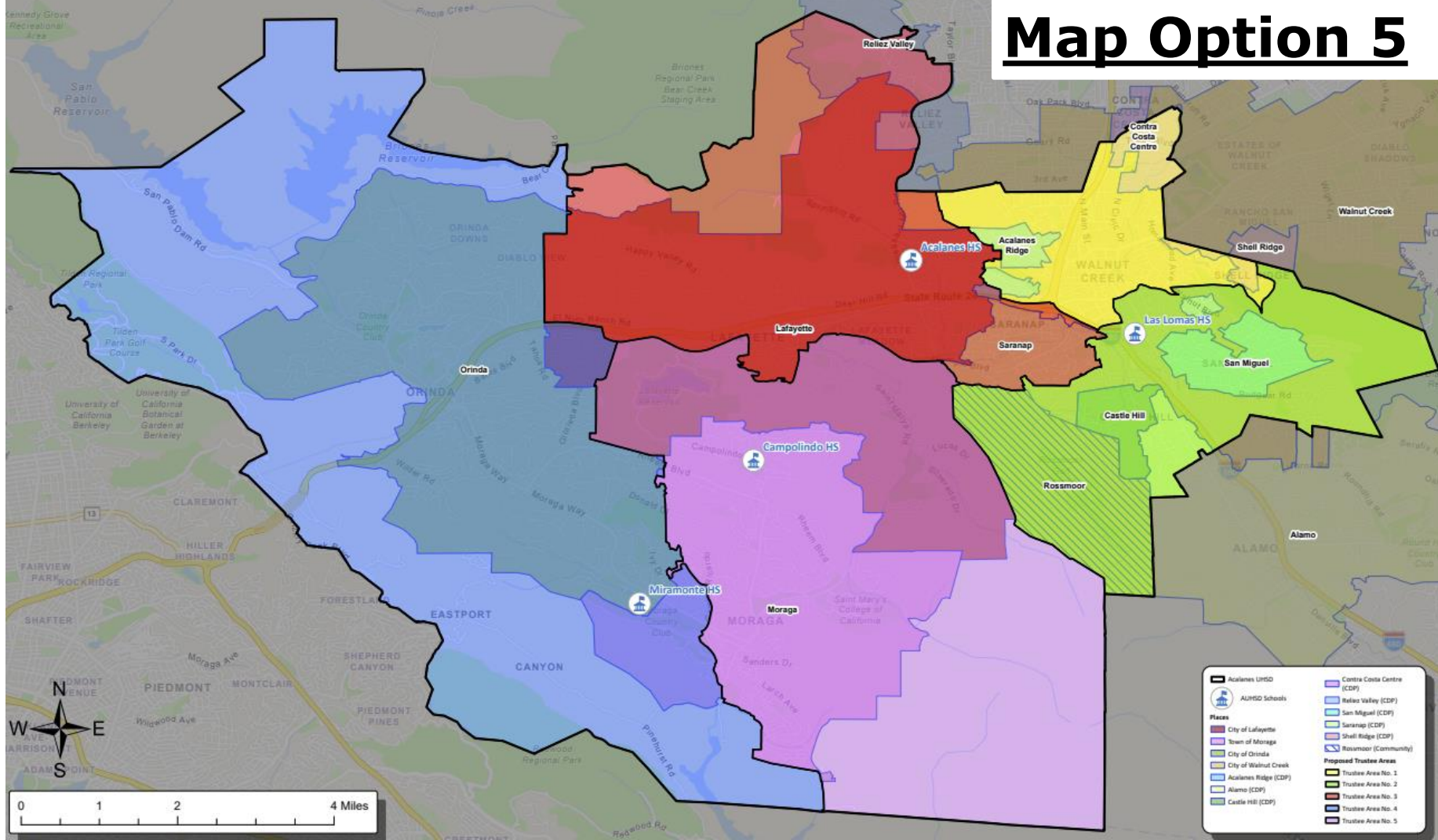
Map Option 5



Map Option 5



Map Option 5



Map 5 – Total Population Data



F3 Law

Total Population:		119,039	Ideal Population:		23,808	Variance:		5.8%
Total Population (2020 Census)								
	Trustee Area 1	Trustee Area 2	Trustee Area 3	Trustee Area 4	Trustee Area 5			
Population	24,652	24,405	23,278	23,311	23,393			
Population Variance	844	597	-530	-497	-415			
	3.5%	2.5%	-2.2%	-2.1%	-1.7%			
Hispanic/Latino	12.8%	7.7%	8.5%	6.7%	9.7%			
White	58.0%	72.4%	69.6%	67.6%	65.1%			
Black/ African American	3.2%	1.6%	1.0%	0.9%	1.0%			
American Indian/ Alaska Native	0.1%	0.1%	0.1%	0.1%	0.1%			
Asian	18.1%	12.9%	12.8%	16.9%	15.7%			
Native Hawaiian/ Other Pacific Islander	0.2%	0.2%	0.1%	0.1%	0.2%			
Other	0.9%	0.5%	0.8%	0.6%	0.4%			
Two or More Races	6.8%	4.6%	7.1%	7.1%	7.8%			

Map 5 – CVAP Data

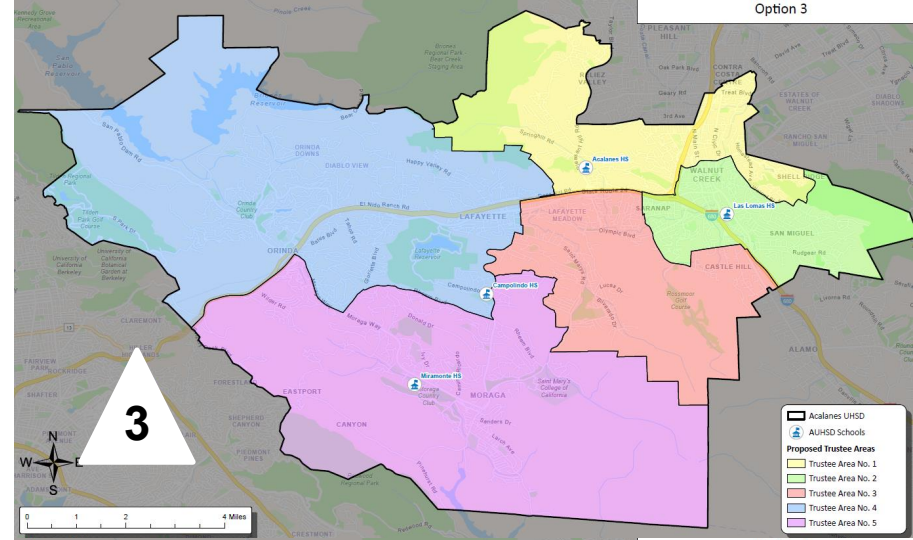
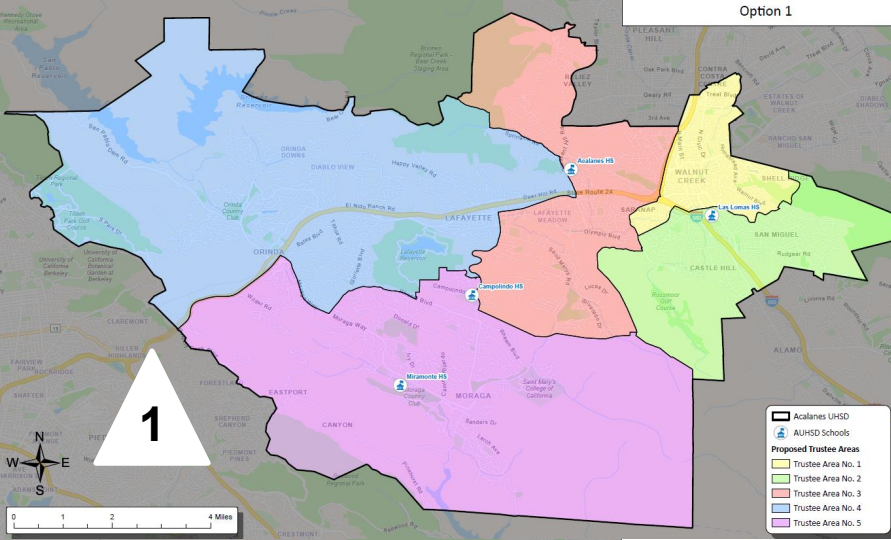
Citizens by Voting Age Population Estimate (2019-2023)					
	Trustee Area 1	Trustee Area 2	Trustee Area 3	Trustee Area 4	Trustee Area 5
Population	19,082	19,307	16,240	16,396	16,546
Hispanic/Latino	12.8%	5.8%	6.9%	5.1%	10.6%
White	66.2%	78.4%	75.4%	75.4%	71.3%
Black/ African American	3.4%	2.1%	1.7%	0.5%	0.7%
American Indian/ Alaska Native	0.4%	0.1%	0.1%	0.0%	0.3%
Asian	12.9%	11.0%	11.6%	15.3%	13.2%
Native Hawaiian/ Other Pacific Islander	0.1%	0.1%	0.0%	0.0%	0.1%
Other	N/A	N/A	N/A	N/A	N/A
Two or More Races	4.2%	2.5%	4.3%	3.6%	3.8%

Map 5 – Income Data

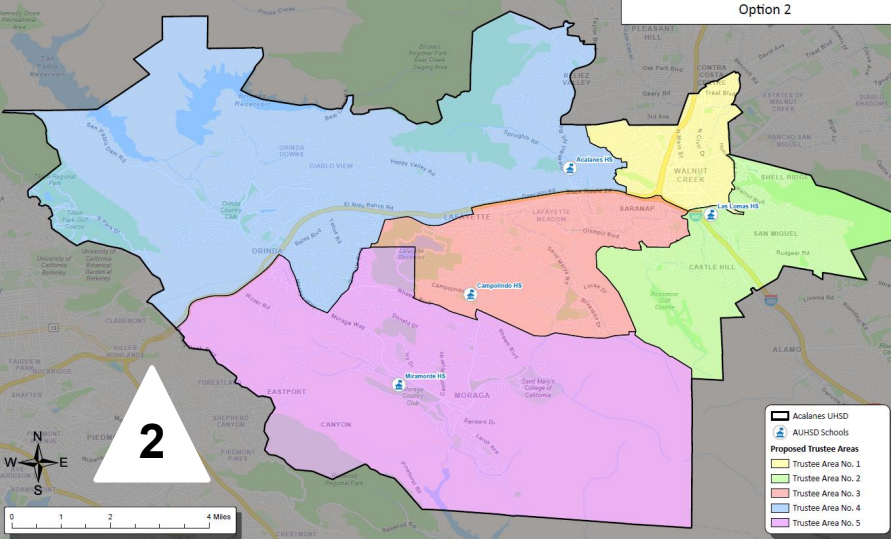


Household Income (2019-2023)					
	Trustee Area 1	Trustee Area 2	Trustee Area 3	Trustee Area 4	Trustee Area 5
Income Less Than \$20K	6.6%	3.6%	5.1%	7.0%	4.0%
Income \$20K - \$50K	10.7%	11.9%	5.7%	5.9%	5.7%
Income \$50K - \$75K	7.0%	8.4%	5.3%	5.6%	5.0%
Income \$75K - \$100K	9.4%	10.8%	6.2%	4.8%	5.8%
Income \$100K - \$200K	34.9%	26.7%	24.7%	22.8%	21.9%
Income Over \$200K	31.4%	38.6%	53.0%	53.9%	57.6%

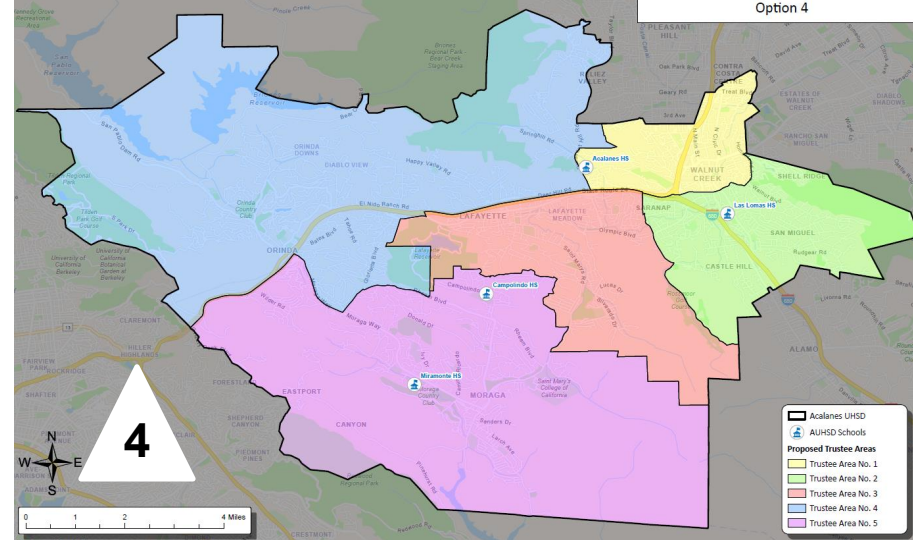
Option 1

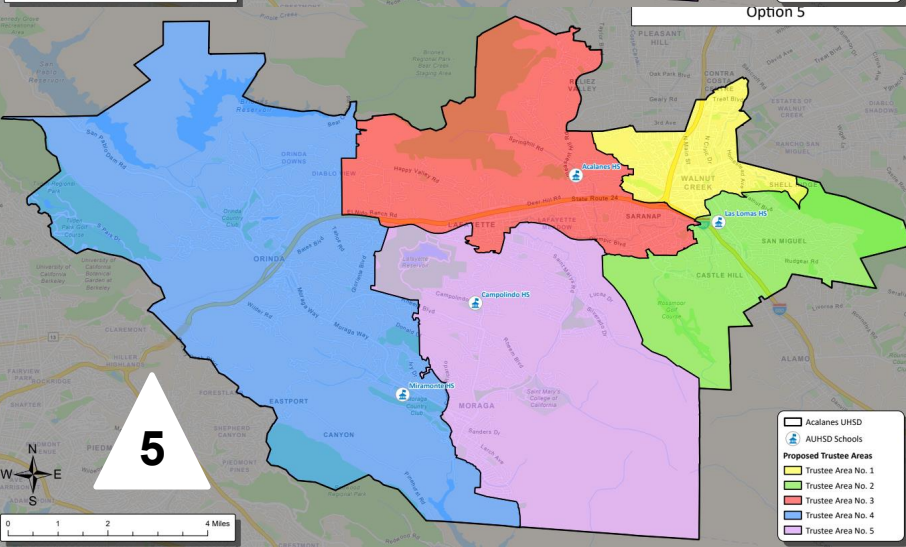
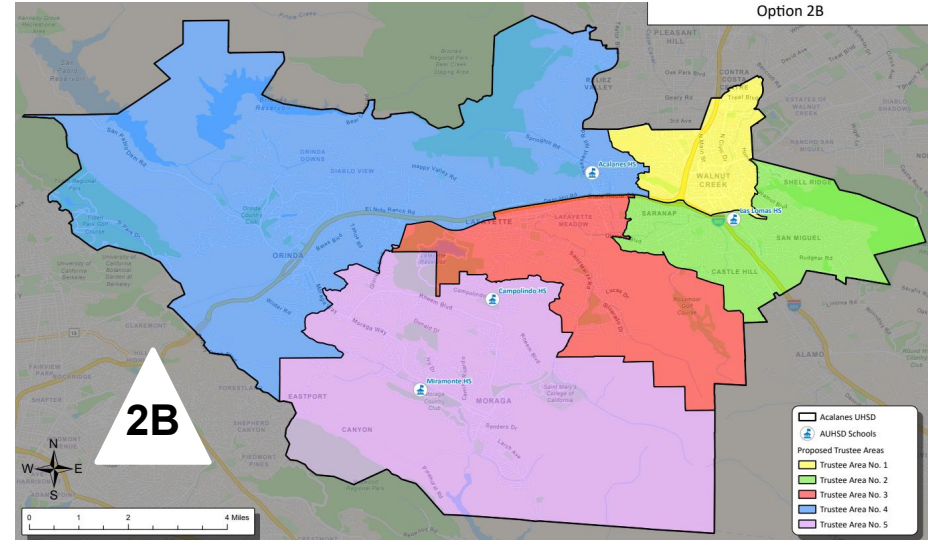
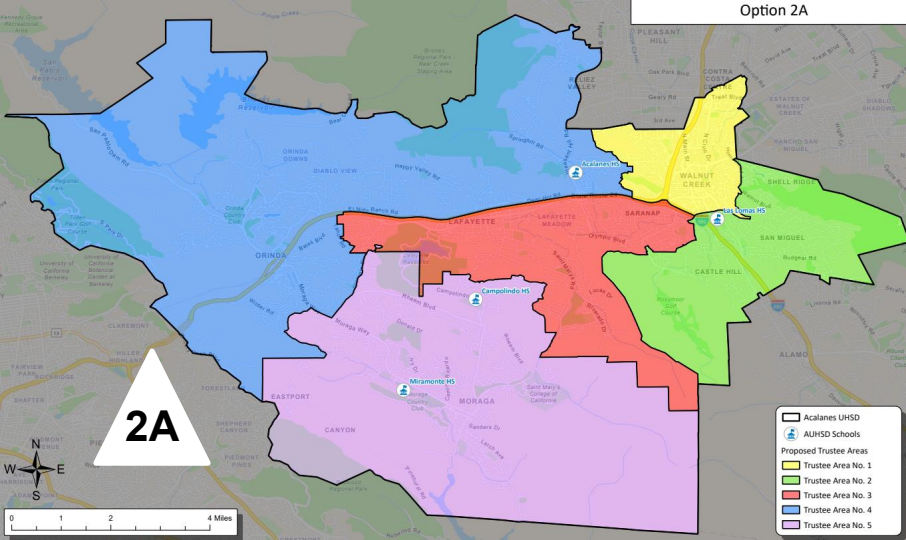


Option 2

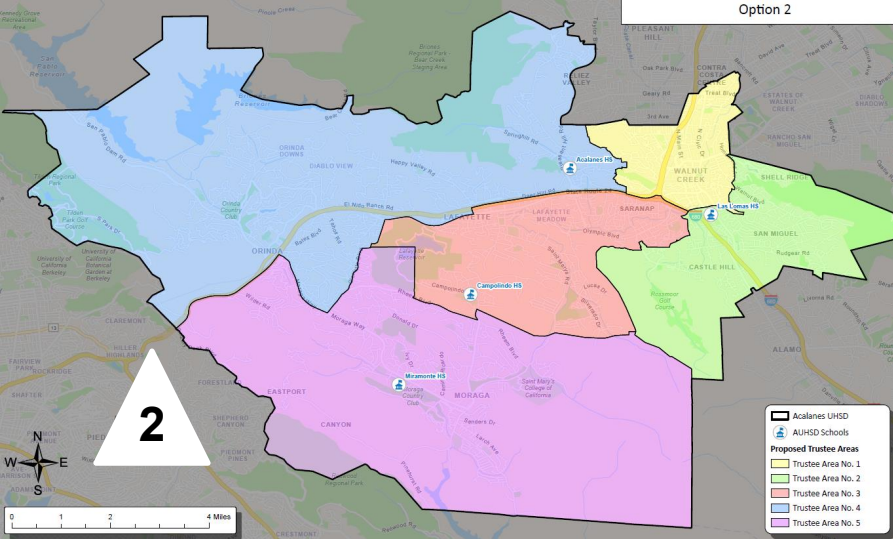


Option 4

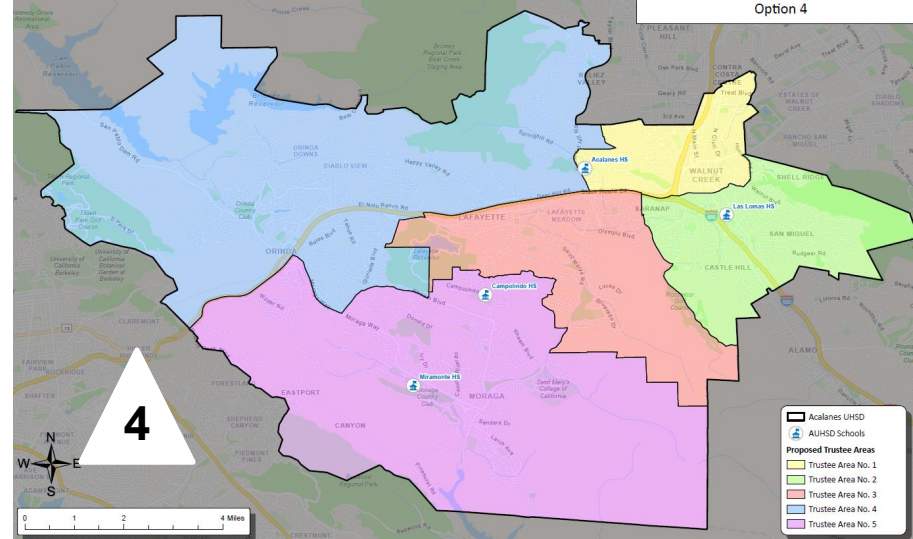




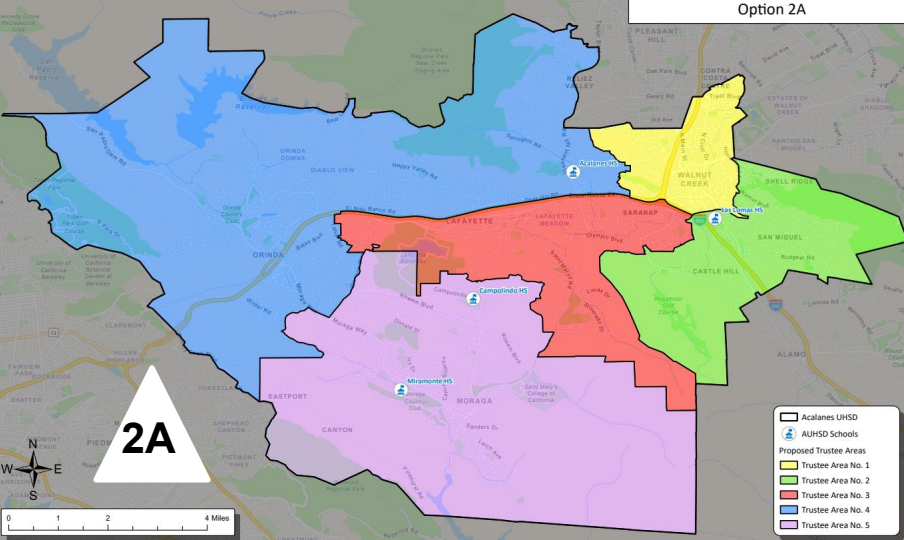
Option 2



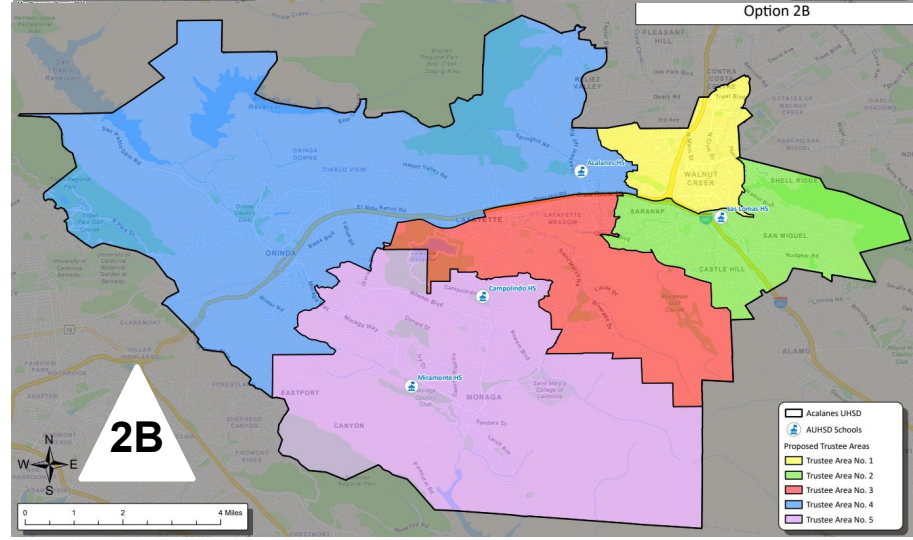
Option 4



Option 2A



Option 2B



Final Thoughts



- Does not change overall District boundaries
- Does not change school attendance boundaries
- **Does not** change how the District is governed:
 - Each Board member, regardless of the trustee area in which he/she resides, still owes fiduciary duty to entire District
 - Still one District with common goals and challenges!!!

Schedule

August 6, 2025	Pre-Map Public Hearing #1
August 20, 2025	Pre-Map Public Hearing #2
<i>Draft map options prepared by demographer</i>	
September 3, 2025	Map Public Hearing #1
September 17, 2025	Map Public Hearing #2
October 15, 2025	Map Public Hearing #3 / Map Adoption



Governing Board

- [Governing Board Overview](#)
- [Transition to By-Trustee Area Election System](#)
- [Governing Board and District Goals](#)
- [AUHSD Governance Handbook 2024-2025](#)
- [Board Policies](#)
- [Board Meeting Dates](#)
- [Board Meeting Agendas](#)
- [Board Meeting Video Broadcast](#)
- [Awareness and Heritage Month Resolutions](#)

[Home](#) > [District](#) > [Governing Board](#) > Transition to By-Trustee Area Election System

September 10

The District will host an informational meeting for questions and answers on September 10 from 5:30 - 6:15 p.m. at the Del Valle Education Center, Rm. 401, located at 1963 Tice Valley Blvd, Walnut Creek, CA 94595. The meeting will be a hybrid Zoom meeting, allowing for community members to view and ask questions remotely. [Meeting Zoom link.](#)

[Community Message - September 9, 2025 - Additional Map Options and Upcoming Meetings](#)

September 17 Draft Map Public Hearing #2 **New Draft Trustee Area Maps - Options 2A, 2B and 5** **Map Options 1, 2, 3 and 4 Remain Active Maps**

Draft Trustee Area Map Options 1 - 5, 2A & 2B will be considered by the Governing Board. Page two overlays our high school attendance boundaries; page three overlays our partner elementary school attendance boundaries; and page four overlays cities and census-designated places (CDPs). Page five provides demographic data for the draft map.

[DRAFT Trustee Area Map - Option 2A](#)

[DRAFT Trustee Area Map - Option 2B](#)

[DRAFT Trustee Area Map - Option 5](#)

[DRAFT Trustee Area Map - Option 1](#)

[DRAFT Trustee Area Map - Option 2](#)


Please submit your comments, feedback or any questions to trusteeareafeedback@auhsdschools.org. You may also comment by telephone at (925) 942-9649. All map preference feedback will be relayed to the Board prior to its discussion and adoption of a map option.

Live Feedback Opportunities **(Prior to Creation of Map Options)**


<i>Date</i>	<i>Place*</i>	<i>Time**</i>
Wednesday, August 6, 2025 <i>Public Hearing - COMPLETE</i>	Acalanes Union High School District Office Community Room 1212 Pleasant Hill Road Lafayette, CA 94549	7:05 p.m.
Wednesday, August 20, 2025 <i>Public Hearing - COMPLETE</i>	Acalanes Union High School District Office Special Governing Board Meeting Community Room 1212 Pleasant Hill Road Lafayette,	7:05 p.m.

Interactive Map Tool

Acalanes UHSD Boundary



AUHS D Schools



Option 1

Proposed Trustee Areas

Trustee Area No. 1

Trustee Area No. 2

Trustee Area No. 3

Trustee Area No. 4

Trustee Area No. 5

☒

Acalanes UHSD Boundary

☒

High School Attendance Boundaries

☐

Feeder District Boundaries

☐

Feeder District Attendance Boundaries

☒

AUHS D Schools

☐

Option 1

☒

Option 2

☐

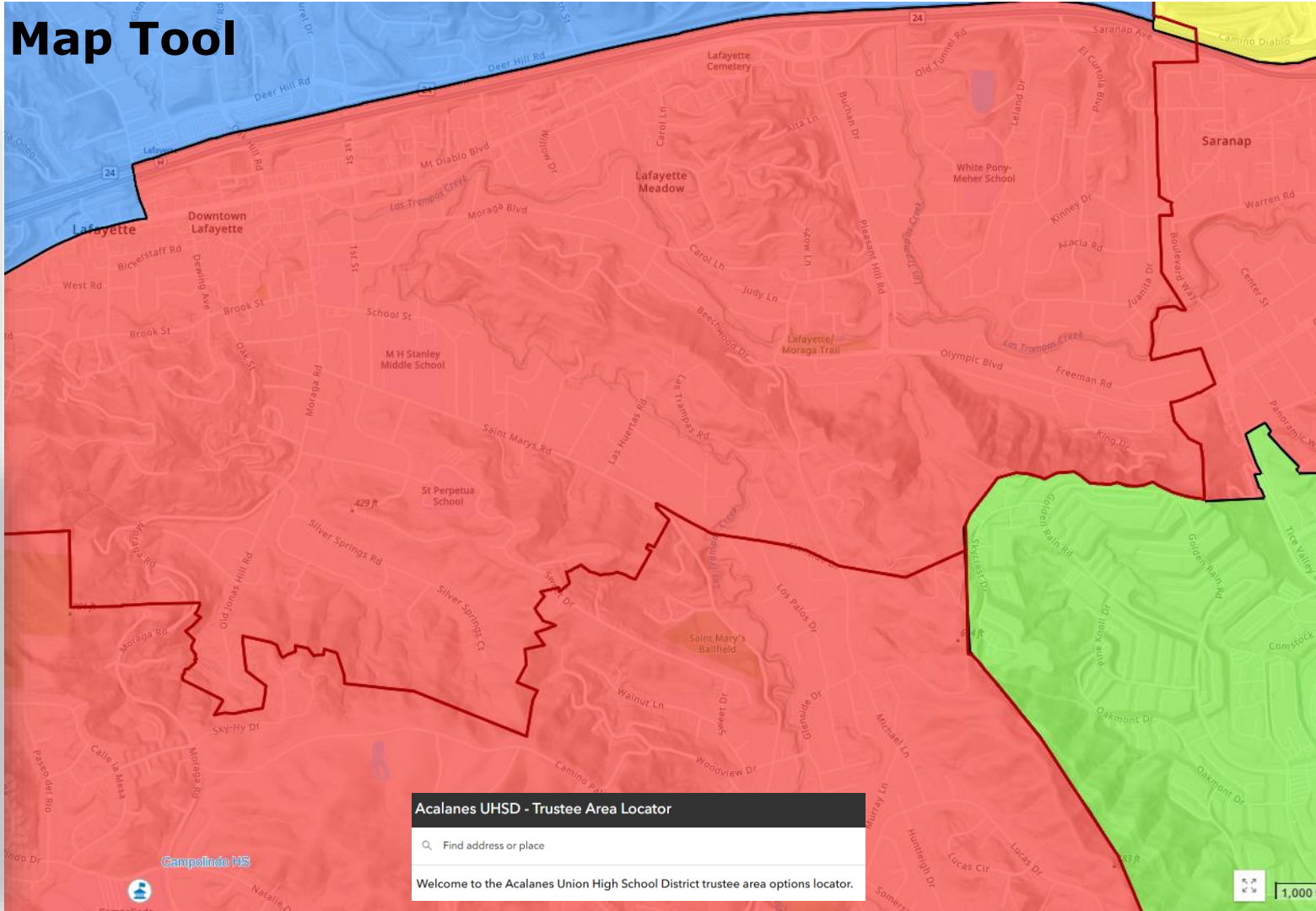
Option 3

☐

Option 4

☐

Places and Communities



Acalanes UHSD - Trustee Area Locator

Find address or place

Welcome to the Acalanes Union High School District trustee area options locator.



1,000





BUSINESS & FACILITIES
CHARTER SCHOOLS
eMATTERS
GOVERNANCE & LEADERSHIP
HIGHER EDUCATION
LABOR & EMPLOYMENT
LITIGATION
STUDENT SERVICES & SPECIAL EDUCATION

F3Law.com

Fresno | Los Angeles | Oakland | Inland Empire | Sacramento | San Diego